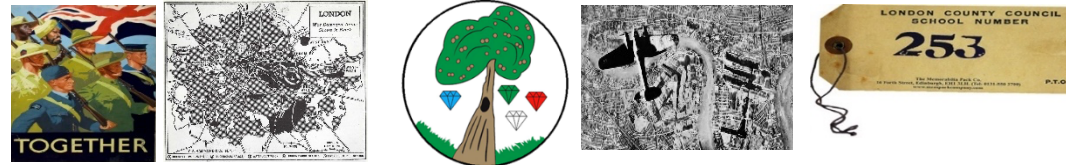


# Year: 4.

# Term: Spring 1



## London at War: Local Area Study

Enquiry Question: How did WWII and the Blitz impact our local area?

### Glossary:

Air Raid Shelter	A building to protect people from bombs dropped by planes
Allies	Countries that fought on the British side.
Black Out	All windows covered at night to prevent the escape of any glimmer of light
Blitz	German bombing campaign against the UK
Evacuee	A person evacuated from a place of danger
Propaganda	information that is used to support a point of view, often political
Rationing	The controlled distribution of shared resources, goods and services
United Nations -	The United Nations (UN) was created at the end of World War II as an international peacekeeping organization and a forum for resolving conflicts between nations.

### Key Questions:

- When was WWII?
- How was Southwark impacted by the Blitz?
- Why did WWII begin?
- When was WWII?
- What was the role of Women in London in WW2?
- What was 'The Home Front'?
- Where did children go when they were evacuated?
- Why did people have to ration?

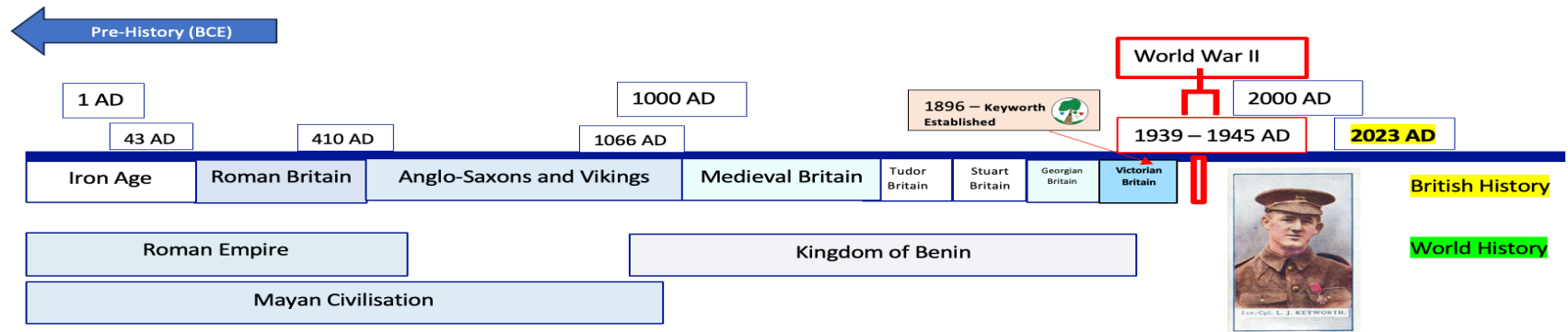
### Key Knowledge:

- World War II began in 1939 and ended in 1945.
- Blitz began on 7<sup>th</sup> September 1940 and Ended 11<sup>th</sup> May 1941
- The intense and sudden bombing of British cities was called the Blitz. Sirens were sounded in the streets to warn civilians that bombers were coming. To escape the bombs people went to air raid shelters.
- During the Blitz, Southwark South east London was impacted hugely – damage was significant - There were lots of 'High Value' targets.
- The Home Guard was formed from volunteers: mostly men who were either too young or too old to serve in the armed forces. Their job was to help protect Britain from invasion by Germany.
- Before the war, most food and goods were imported to Britain by air or sea. This was not possible once the war began so rationing was put in place to ensure everyone got a fair share. People were encouraged to grow as much food as possible so the country could be self-sufficient.
- As so many men were overseas serving in the army, many women took over jobs in industry, farming and driving that were usually done by men.
- Many families built air raid shelters in their gardens where they stayed during bombing raids. Other people sheltered in tube stations.

### Key People:

Winston Churchill:  
Prime Minister of Great Britain

Adolf Hitler: Leader of Germany



### Timeline of Events

1 <sup>st</sup> September 1939	3 <sup>rd</sup> September 1939	3 <sup>rd</sup> September 1939	19 <sup>th</sup> April 1940	10 <sup>th</sup> May 1940	10 <sup>th</sup> May 1940	10 <sup>th</sup> July 1940	2 <sup>nd</sup> February 1943	6 <sup>th</sup> June 1944	7 <sup>th</sup> May 1945
German soldiers invade Poland.	British Prime Minister Neville Chamberlain declares war on Germany	Canada, Australia, France and South Africa declare war on Germany.	Germany invades Denmark and Norway	Germany Attacks Western Europe	Winston Churchill becomes Prime Minister	Battle of Britain Begins	Battle of Stalingrad. Germany's first major defeat.	D-Day landings: British and American troops land in Normandy.	Germany surrenders to the Allied forces.

## CLASSES 4EB and 4AB

Homework to be completed and returned by  
**Monday 5<sup>th</sup> February**

Dear Children and Adults,

In Spring 1, Year 4 are going to be leaning about WW2 and its impact on London. This is a local history unit where children will be looking at how WWII impacted the human and physical geography of Southwark and Kennington including how the war affected families and children in the area.

### Spelling

Don't forget spelling rules for your Spelling words will go home with you Friday for your quiz the following week.



### Maths

Remember to revise your *time tables*.

Practice the *number facts* you are working on each week. You will be tested on these!



And please don't forget to log onto [Times Table Rock Star!](#)

### Places to Visit:

**War Memorial:** Dulwich Old College, College Road

**Imperial War Museum:** Lambeth Road, London, SE1 6HZ

**Museum of London – Docklands:** No1. Warehouse, West India Quay E14 4AL

# Year 4 Homework – London at War

## WRITING AND HISTORY

You have a homework scrap book to use to complete your homework project. Over the next few weeks complete some of these activities or make some up of your own. You are also welcome to post your homework on google classroom.

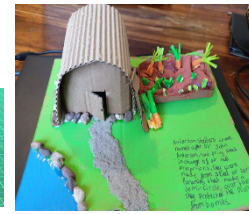
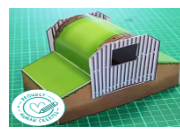
### CAN YOU TRY ONE OF THESE WRITING TASKS?

- Imagine you are an evacuee. Write a postcard home explaining what has happened to you.
- Write instructions or advice during an air raid.
- Write a song to boost morale.

### ALSO TRY AN ART ACTIVITY

- Make a model of an air raid shelter / Anderson shelter. Think about which materials would be best to use.
- Draw and label an aeroplane from WWII e.g. British Spitfire.
- Research a WWII recipe and make it at home (or make up your own one based on the rationed food items available!) Photograph the meal and write out the recipe. Write a review of the meal!

If you have an idea of your own please feel free to do this!



## Reading

Remember to read each day and get an adult to sign your reading record so you can collect your reading rewards!



### Useful Websites:

**BBC Teach – Facts, Videos and Activities**

<https://www.bbc.co.uk/teach/class-clips-video/history-ks2-world-war-two/zjnyscw>

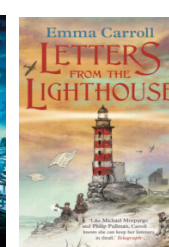
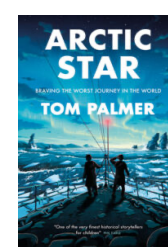
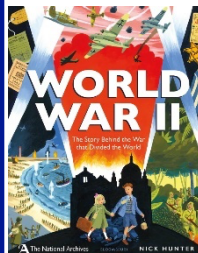
<https://www.bbc.co.uk/teach/school-radio/history-ks2-world-war-2-clips-index/zic8cqt>

<https://www.funkidslive.com/learn/w-hat-was-the-blitz/#:~:text=The%20Blitz%20was%20a%20major%20destruction%20and%20loss%20of%20life.>

<https://www.dkfindout.com/uk/history/world-war-ii/london-blitz/>

## Recommended Reads:

### Non-Fiction



### Fiction