



# Year 1 Newsletter

## Spring Term 2 2024/25



What a fantastic start to the Spring Term we have had! Thank you so much for your continued support. This newsletter will provide you with information on the half term ahead. If you have any further questions, please do not hesitate to contact the office, who will put you in touch. We do know how hard it can be to get information about what your child has been up to throughout the day, to that end we have our Year 1 webpage which will let you know what the children have been learning across the curriculum over the past term. It can be found here:

<https://www.thegemfederation.co.uk/besemer-primary/learning-hub/classes/year-1/>

The Year 1 Team:	
1NS	Ned, Lordina, Lisa
1JM	Jack, Ibrahim, Gina
1ST	Stacey, Kathy

### **History / Geography** - Our topic this half term is **London: New and past**

Our Topic this term is history based around our local area. We will be using our enquiry skills to find out more about our local area, what has changed and why. We will start by looking at the history of our school, when it was built and the similarities and differences between school life in the past and school life now. We will look at Henry Bessemer and what influence he had on the local area and build up our understanding and knowledge of the Great Exhibition and what influence that had on the local community at the time.

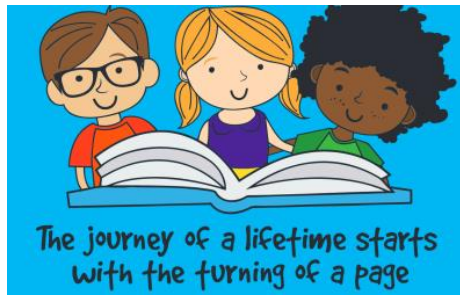
### **English** -

This term we will be reading *Billy and the Beast*.

We will be writing letters, character descriptions, drawing story maps and rewriting familiar stories. We will also be looking at the use of tenses in our writing and how to use suffixes. We will continue to talk about nouns, verbs, adjectives, and adverbs. Keep practising letter formation at home, encouraging children to form their letters with the correct composition (using the ditties really help with this) and make sure they are sitting on the line!

### **Reading** -

We cannot stress enough the importance of having your child read to you daily. We are asking for a minimum of 10 minutes each day. It is noticeable when children are reading regularly at home and they are proud to share this with the class. When your child is confident with their home reader, it will be changed. It is important that you child can ask questions about the story and answer questions that adults are asking them. Your child should be able to retell the story in their own words, identify the characters, setting and discuss the feelings of characters and choices they have made in the story.



**Please make sure you sign your child's reading diary every day after they read. Children are very excited to receive their reading certificates.**

---

### **Maths** -

In maths this term we are moving into Place Value to 50 and the composition of these numbers (how many tens and how many extra ones). Through this, we will revisit addition and subtraction. Through our Mastery approach, we use concrete materials, part-part-whole mats, draw pictures to work out answers and explore the language around problem solving and reasoning. We will also be continuing to discuss measurement and use non-standard units to measure objects. We will be using a practical approach to measurement investigating length and height as well as mass and volume.



Please continue to have mathematical discussions with your children around time, weight, measurement (length and height and weight and capacity), coins, skip counting (in 2s, 5s and 10s), the composition of numbers, number bonds. Remember, Maths is EVERYWHERE and every conversation could lead to that 'light bulb' moment for your child.

Don't forget to log on to Times Tables Rockstars

<https://play.ttrockstars.com/auth/school/student>

---

### **Science**

This term we are learning about Plants and Growing. We will be conducting a range of practical experiments and will be attempting to grow a multitude of different plants and vegetables. We will be learning about the different parts of a plant and what jobs these parts have to help plants grow. Any donations of soil, pots, seeds and gardening utensils would be great for this upcoming topic.

---

### **P.E** -

This half term we will be having one indoor PE session which will be focussing on teamwork. We will also have one outdoor session with a focus on target games and developing hand eye coordination and ball skills.

All children **must** wear their PE kit into school on the specified days. PE kit should consist of plain navy (black if necessary) bottoms (leggings, shorts or tracksuit bottoms), a white school t-shirt or gem house t-shirt and trainers. This should be worn with a school jumper or cardigan.

---



## **PSHE –**

This half term, we will be looking at health and safety with lessons about keeping safe in the local environment which will include looking at the roles of emergency services and road safety.

## **Music –**



We will continue with our weekly music lessons with Duncan, looking at rhythm, the beat and pulse and using call and response songs.

## **Computing –**

This half term we are learning about programming. The children will start to learn about what robots can be used for and how they follow a set of instructions called algorithms. The children will be challenging themselves to become programmers throughout the course of this half term.

## **NATURE GARDEN**

All Year one classes will have the opportunity to attend the Nature Garden on a Friday afternoon. If your child has a pair of wellies they would like to bring in, they are more than welcome to leave them on their peg. Please ensure they are in a bag labelled with their name.

### **Daily timetable:**

**9:00–9:10** Handwriting/ Finger Gym

**9:10 – 9:30** Whole class input Maths or English

**9.30-10.20** English/Maths (2 groups) COOL Time (Choose Our Own Learning – 2 groups)

**10.20-10.40** Phonics

**10.40-11.00-** Break

**11:00–12:00** English/Maths (2 groups) COOL Time (Choose Our Own Learning – 2 groups)

### **LUNCH**

**1:00-1.30** Topic/Science/Computing/P.E/Art/PSHE (input)

**1.30- 2.50-** COOL Time (and wider curriculum activity related to input)

**1:30 – 3:00** - Reading groups will run alongside afternoon activities

**3:00 – 3:25** Tidy up time story time/maths/assembly

**3.25** - Home time