

Keyworth Primary School Newsletter



Keyworth Primary School

Part of The Gem Federation

www.thegemfederation.co.uk

Address: Faunce Street, London, SE17 3TR

Email: keyworth@gemfed.co.uk

Telephone: 020 7 735 1701

Executive Headteacher: Sarah Beard

Head of School: Ray Capper

Friday 22nd March 2024

Term Dates 2023-2024

September 2023							October 2023							November 2023							December 2023						
Mo	Tu	We	Th	Fr	Sa	Su	Mo	Tu	We	Th	Fr	Sa	Su	Mo	Tu	We	Th	Fr	Sa	Su	Mo	Tu	We	Th	Fr	Sa	Su
				1	2	3	2	3	4	5	6	7	8	6	7	8	9	10	11	12	4	5	6	7	8	9	10
4	5	6	7	8	9	10	9	10	11	12	13	14	15	13	14	15	16	17	18	19	11	12	13	14	15	16	17
11	12	13	14	15	16	17	16	17	18	19	20	21	22	20	21	22	23	24	25	26	18	19	20	21	22	23	24
18	19	20	21	22	23	24	23	24	25	26	27	28	29	27	28	29	30				25	26	27	28	29	30	31
25	26	27	28	29	30		30	31																			

January 2024							February 2024							March 2024							April 2024						
Mo	Tu	We	Th	Fr	Sa	Su	Mo	Tu	We	Th	Fr	Sa	Su	Mo	Tu	We	Th	Fr	Sa	Su	Mo	Tu	We	Th	Fr	Sa	Su
1	2	3	4	5	6	7	5	6	7	8	9	10	11	4	5	6	7	8	9	10	1	2	3	4	5	6	7
8	9	10	11	12	13	14	12	13	14	15	16	17	18	11	12	13	14	15	16	17	8	9	10	11	12	13	14
15	16	17	18	19	20	21	19	20	21	22	23	24	25	18	19	20	21	22	23	24	15	16	17	18	19	20	21
22	23	24	25	26	27	28	26	27	28	29				25	26	27	28	29	30	31	22	23	24	25	26	27	28
29	30	31																			29	30					

May 2024							June 2024							July 2024							August 2024						
Mo	Tu	We	Th	Fr	Sa	Su	Mo	Tu	We	Th	Fr	Sa	Su	Mo	Tu	We	Th	Fr	Sa	Su	Mo	Tu	We	Th	Fr	Sa	Su
6	7	8	9	10	11	12	3	4	5	6	7	8	9	1	2	3	4	5	6	7	5	6	7	8	9	10	11
13	14	15	16	17	18	19	10	11	12	13	14	15	16	8	9	10	11	12	13	14	12	13	14	15	16	17	18
20	21	22	23	24	25	26	17	18	19	20	21	22	23	15	16	17	18	19	20	21	19	20	21	22	23	24	25
27	28	29	30	31			24	25	26	27	28	29	30	22	23	24	25	26	27	28	26	27	28	29	30	31	
														29	30	31											

School Holidays	INSET Days	Tutorial Day	Bank Holidays	Polling Day
-----------------	------------	--------------	---------------	-------------

Important dates for your diary

Event	Class assemblies
08.01.24	INSET day
09.01.24	Children return
17.01.24	Reception celebration day at 9:00am
24.01.24	Reception reading workshop at 9:00am - part 1
31.01.24	Reception reading workshop at 9:00am - part 2
05.02.24	Year 1 reading workshop and celebration at 9:00am
07.02.24	Reception reading workshop at 9:00am - part 3
19.02.24	Tutorial day - school closed to children
13.03.24	Year 4 x-table check parent/carer workshop at 9:10am
20.03.24	Year 6 SATs parent/carer workshop at 9:10am
28.03.24	Last day of term
16.04.24	Children return
	24.01.24 6CS
	31.01.24 4EB
	07.02.24 2ER
	06.03.24 Year1
	13.03.24 5AA
	20.03.24 3GC
	27.03.24 RCJ

Celebrations

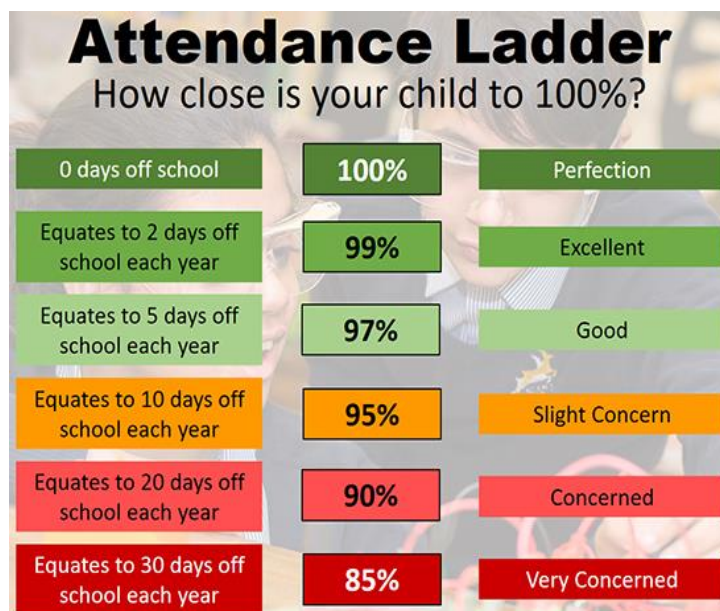
Class	Star of the Week	Writer of the Week	Mathematician of the Week	Reader of the Week	Presenter of the Week
RCJ	Daniel	Anela	Axel	K'sharii	
1AJ	Thomas	Ali	Alex	Abdella	Benyamin
1HE	Misbahu	Jayden	Savannah	Lacey	Fatima
2PH	Georgina	Tajay	Zak	Ami	Ryan
2ER	Sonnie	Fatima N	Josiah	Sebi	Shahid

Class	Star of the Week	Writer of the Week	Mathematician of the Week	Presenter of the Week
3MR	Zeynab	Jake	Manha	Kayden
3GC	3GC	Elise MQ	Alan	Malik
4AB	Yahya	Sumayah	Kieron	Nora
4EB	Keily	Samet	Ava	Hamja
5BH	Uke	Valentina	BJ	Stephanie
5AA	Asly	Javel	Jayme	Anas
6MV	Qhalil	Honyar	Jawdan	Gabriella
6CS	Ariella	Nickari	Imaan	Bazeet

This week's gem winners are...	Sapphires
This week's treasure chest winners are...	1AJ 4AB

Attendance

Class	Attendance
RCJ	88.42
1AJ	92.21
1HE	99.31
2PH	87.69
2ER	97.69
3MR	99.17
3GC	97.73
4AB	93.16
4EB	89.56
5BH	94.98
5AA	96.04
6MV	94.00
6CS	97.69
Whole school	94.22
School average (year)	94.4%
National average (year)	94.1%
School target	96%



This week's attendance winners are **3MR**

Classes with the best attendance this term so far...

1st	2nd	3rd
3GC 97.69%	4EB 96.18%	4AB 95.83%

Latest News

Please note that this will be the last newsletter of the term.

End of term

Keyworth closes for the end of term on **Thursday 28th March at 3:30pm** - afterschool club will remain open until 5:55pm.

The children return to school on **Tuesday 16th April at 9:00am**. Breakfast club will be open from 8:00am.

Behaviour and Self-regulation Policy - reminder

At the start of the Spring term I shared our updated *Behaviour and Self-regulation Policy*. Full details of the policy can be found on the school website. Below you will find details of our updated behaviour plan:

The Gem Federation Behaviour Plan

Sanctions

1. Verbal warning
2. Amber card x2
3. Miss 5 minutes of Golden Time
4. Miss a further 5 minutes of Golden Time (-10)
5. Red card – Detention (5 detentions result in a letter home and an Internal Exclusion)
6. Sent to Senior Leaders which is followed by a one-day Internal Exclusion.
7. External Exclusion

Children should be given verbal warnings between each card change to remind them of the behaviours we are looking for.

Examples of card changes

- Talking or calling out when you have been asked not to
- Getting out of your seat when you have been asked not to
- Distracting others from their learning
- Graffitiing your work, book or school property
- Not trying your best with your work
- Not walking silently around the school
- Not standing still when the bell goes or running to the line
- Teasing another child
- Using inappropriate language

Examples of reasons to go straight to a Red Card (detention)

- Offensive name-calling
- Swearing at someone else
- Disrespecting adults
- Purposely damaging property
- Not telling the truth
- Playfighting or being dangerous
- Pushing and shoving

Examples of reasons to go straight to an Internal Exclusion

- Fighting or physically attacking another child
- Using discriminatory language intentionally to offend
- Purposely taking other people's or the school's property
- Destroying property in anger

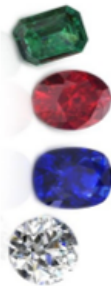
Examples of reasons to go straight to an External Exclusion

- Hurting an adult on purpose
- Being out of control

The Gem Federation Behaviour Plan

Rewards

1. All staff congratulate children verbally for appropriate, kind and considerate behaviour.
2. Children in KS1 and KS2 receive a brilliant behaviour sticker for exceptional behaviour during that day (ending the day on gold).
3. Each week we nominate one child from each class to receive a commendation for impressive work or behaviour. Each child receives a Star of the Week certificate and 3 gems. Their name is displayed on a communal board and in the weekly newsletter.
4. Each week we also nominate one child from each class to receive a commendation for their effort or attainment in mathematics, the presentation of work and writing. Each child receives a certificate and 3 gems. Their name is displayed on a communal board and in the weekly newsletter.
5. Each child from Years 1 to 6 belongs to a house (Diamonds, Rubies, Emeralds and Sapphires). Improvement, effort and achievement in work or behaviour is rewarded with a gem. At the end of the term, the winning house is rewarded with a trip.
6. Following the Golden Rules throughout the week is rewarded with 30 minutes of Golden Time on Fridays. Children can choose from a menu of activities offered across each year group.
7. Each class from Reception to Year 6 can earn Treasure Chests if the whole class is behaving well. The class in each key stage with the most Treasure Chests in a week are awarded 15 minutes extra play. The Reception class with the most treasure chests each week is awarded Lenny Lion in assembly.
8. Children are awarded a leaf on The Values Tree when they demonstrate behaviour in line with The Gem Federation's core values.



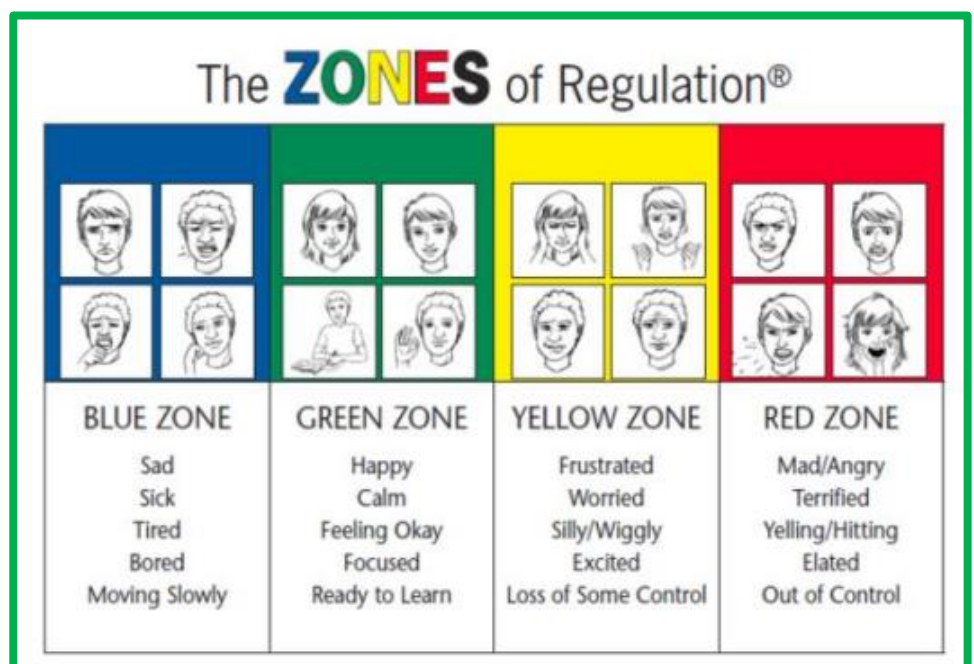
Possible reasons to get a gem

- ✓ You complete an excellent piece of work
- ✓ You try very hard
- ✓ You are kind to someone
- ✓ You are helpful
- ✓ You line up and move around the school sensibly
- ✓ You show excellent listening skills

We also teach the children the importance of understanding their feelings and provide them with strategies to help manage their emotions using The Zones of Regulation.

The full school policy can be found by clicking on the link below:

[School policies](#)



Keyworth Friends Easter treats sale

Keyworth Friends will be hosting an Easter treats sale on **Thursday 28th March**. As mentioned previously, the only way the school can reduce costs for families in relation to trips and activities is by parents/carers actively supporting our fundraising efforts and initiatives. Thank you to everyone who is supporting this event! Please contact Keyworth Friends for further information:

keyworthfriends@gmail.com



**KEYWORTH PRIMARY
SCHOOL FRIENDS
ASSOCIATION**

Donations

WELCOME

Please help us by donating any cakes, chocolates or treats to the office (NO NUTS)

Many hands make light work!

We appreciate every donation

Easter treats

SALE

Keyworth Friends are raising money to put back into our children's education and entertainment

Please support us if you can!

THURSDAY 28TH MARCH

AFTER SCHOOL IN THE PLAYGROUND

After school club provision - message from Sarah

We would like to increase the number of activity clubs we provide after school. We will continue to provide free outdoor sports clubs as we receive funding from the DFE via the sports premium. We also believe that exercise and movement are vital to wellbeing.

We would like to offer a more varied menu of activities but unfortunately, we will need to charge for these because of budgetary restraints.

Please complete the below survey so we can begin to create a picture of what the community would like and how much would be a realistic cost for families to afford:

<https://forms.gle/hDEtXzvg72xiuSUB6>

Regarding Healthcare Professional Recommendations for EHCPs and SENDIF funding - message from Lori

We've observed that some healthcare professionals are advising parents/carers regarding Educational Health and Care Plans (EHCPs) and/or SENDIF (Special Education Needs and/or Disability) Inclusion Fund for 3- & 4-year olds following assessments. It is important to clarify that these recommendations are often general and not specific to individual children.

Healthcare professionals may lack familiarity with the intricacies of the education system, and it's crucial to understand that an EHCP is directly related to the provision of educational settings. Having a diagnosis does not automatically necessitate an EHCP.

EHCPs are typically designated for children with significant social, emotional, and mental health needs, self-care requirements, as well as substantial learning needs.

In our federation, students have access to a variety of adjustments within the classroom and through interventions delivered by the teaching team, or provided by our inclusion team (where appropriate), tailored to each student's unique requirements.

There appears to be some misunderstanding among doctors and other medical professionals regarding Special Educational Needs (SEN) processes within education. We encourage you to explore our inclusion website's FAQ section for comprehensive information on the support and adjustments available to our students:

[Inclusion at Keyworth](#)

Reception offer day

The Reception 2024 offer day is **Tuesday 16th April 2024**. If you've applied on time, you'll receive an email after 5:00pm which will provide information on what to do next. You'll also be able to view the outcome of your application in the evening on the [eAdmissions](#) website.

No action is required if you want to accept the school offered to your child.

To reject the offer of a school place allocated to your child, you must notify the school admissions team of the borough where you live by **Tuesday 30th April** and include your unique application reference number by this date.

Good luck!

Neurodiversity Week

This week we celebrated Neurodiversity Week! Through various activities and events children have deepened their understanding, acceptance and inclusivity for all.



Year 4 Imperial War Museum visit

Year 4 had a fantastic day at the Imperial War Museum this week. They were excited to be able to see some amazing remnants from World War 2 including spitfires, submarines and tanks. It was a great experience for them to be around artefacts from the topic they have been studying.



Year 4 visit St Mary's Newington Church

As part of year 4's RE unit on the Christian festival of Easter, year 4 visited the local church of St Mary's Newington to learn from their vicar about how Christians celebrate their Holy Week. They enjoyed looking at some of the special objects in the church and even got to try on some outfits!



Comic Relief and Red Nose Day joke competition

As part of Comic Relief and Red Nose Day, the children shared jokes to make others laugh. Classes picked a representative to share their joke during our whole school assembly.

Congratulations to Freya (2ER) and to Azra (5BH) who were chosen as having the funniest jokes!

Thank you to anyone who contributed donations!



Southwark public health update

Measles is a serious illness that can cause brain damage and other life-long complications, and leads to around 20% of those infected having to spend time in hospital.

Measles is spreading in South London due to low MMR uptake. [The MMR vaccine is safe and highly effective at preventing measles](#). Children and young people aged under 25 are being particularly encouraged to make sure they have had two doses of MMR vaccine, as younger people are more likely to catch measles. Anyone who works in a busy environment or has lots of contact with children and young people should also make sure they are up to date. To help people who have not had two doses of their MMR vaccine catch-up, we are organising a series of community clinics in Southwark libraries. Catch-up clinics are being held at the Una Marson Library on:

- **Wednesday 27th March, 10:00am to 2:30pm**, Una Marson Library, 62 Thurlow Street, London, SE17 2GN;
- **Saturday 6th April, 11:00am to 3:30pm**, Una Marson Library, 62 Thurlow Street, London, SE17 2GN.

[Book a slot at the clinic here](#). It is open to anyone who has not previously had a dose of MMR vaccine, or has only had one dose previously.

Support for families 1 - Bring Your Family to University Days

Bring Your Family to University Days are free one-day events on UCL's central London campus for students from Year 5 to Year 11, and their families.



Bring Your Family to University Days are a series of free one-day events aimed at providing information, advice and guidance about university to young people and their parents and carers through fun and interactive sessions on UCL's central London campus. These events will include activities such as subject taster lectures, panels, support sessions for parents/carers, campus tours and the opportunity to talk to current university students. A **FREE** packed lunch will be provided.

Further information and booking details can be found by clicking on the link below:

[UCL family days](#)

Support for families 2 - Southwark's Easter of Food and Fun

Southwark's Easter of Food and Fun will run across the Easter holidays and will offer free places for children between the ages of 4-16 years receiving benefits-related free school meals or from families with no recourse to public funds.

Southwark are partnering with local holiday hubs across the borough to provide an exciting programme of food and activities for children and young people in the local community.

Each programme will provide:

- Free, nutritious and tasty food;
- Fun physical activity sessions;
- A wide range of other enriching activities to suit different ages and personalities;
- Opportunities to learn more about food and nutrition.

Further information and booking details can be found by using the link below:

[Southwark's Easter of Food and Fun](#)

Support for families 3 - parenting classes



Parents of 11-18 year olds

Programme Details

Location: Get Rid of and Donate CIC, Green Space Works Studio 1 LJ Works, 7 Gastineau Yard, London SW9 7FA

Date: Every Tuesday, from 16th April 2024 to 17th July 2024

Time: 6pm -9pm

Facilities: Evening meal provided and some help with childcare available (speak to Joy)

Contact: Joy Ohen 07701048479

Sign up at <https://bit.ly/SFSCSLambeth>



Scan here to book a place

"I found it very supportive being part of a group and sharing ideas with other parents."

Parents of 11-18 year olds



A free inclusive course to help parents and carers to raise healthy and happy young people

FREE



strengthening families
strengthening communities

Strengthening families,
strengthening communities

Support for families 4 - FREE cycling training

Children in Southwark can learn to cycle, free of charge, during the Easter holidays. Learn-to-ride sessions and group cycle training courses are at Burgess Park and Dulwich Park. Training is done in small groups with two fully qualified instructors. Further information can be found below:

[Cycle confident](#)

Support for families 5 - swim courses for children

Southwark are running a swim school for children at their leisure centres over the Easter holidays. The courses are perfect for beginners or to progress children's technique. Times and prices vary. Further information can be found below:

[Southwark Easter swimming courses](#)

Support for families 6 - short breaks for families of children with SEND (EHCPs)

Click on the link below for a collection of short breaks funded by Southwark Council for children and young people with special educational needs or disabilities. These activities are intended for children and young people aged 5-19 with an EHCP who are unable to access universal provision, and start Easter 2024.

[Southwark short breaks](#)

Additional activities for all Southwark residents can be found by clicking on the link below:

[Southwark local offer](#)

Word of the Week

This week's *Word of the Week* is **apparent**. Please discuss its meaning with your child/ren and encourage them to share what they have learned with their teachers in school to receive gems. Do they know the origin? Can they use the word correctly in a sentence? Can they identify and explain the meaning of alternative forms e.g. **apparently** Can they identify any synonyms or antonyms?

Please find below previous words that we have used in school:

Previous words	defensible, corresponded, exaggerated, recommended, determined, hinder, accommodated, controversy, sacrifice, persuade, awkward, thorough, convenient, suggested, harassed, relevant, definite, category, curious, occurrence, conscious, familiar, mischief
-----------------------	--

I would like to wish you and your family a wonderful weekend and end-of-term break!

Ray Capper
Head of School