

Bessemer Primary School Newsletter



Part of The Gem Federation

www.thegemfederation.co.uk

Executive Headteacher: Sarah Beard

Address: Dylways, London, SE5 8HP

Email: office@bessemergrange.southwark.sch.uk

Telephone: 020 7 274 2520

Head of School: Elizabeth Whitehead

Dates for your Diary

Friday 23rd February 2024

Term Dates 2023-2024

September 2023							October 2023							November 2023							December 2023						
Mo	Tu	We	Th	Fr	Sa	Su	Mo	Tu	We	Th	Fr	Sa	Su	Mo	Tu	We	Th	Fr	Sa	Su	Mo	Tu	We	Th	Fr	Sa	Su
				1	2	3							1			1	2	3	4	5					1	2	3
4	5	6	7	8	9	10	2	3	4	5	6	7	8	6	7	8	9	10	11	12	4	5	6	7	8	9	10
11	12	13	14	15	16	17	9	10	11	12	13	14	15	13	14	15	16	17	18	19	11	12	13	14	15	16	17
18	19	20	21	22	23	24	16	17	18	19	20	21	22	20	21	22	23	24	25	26	18	19	20	21	22	23	24
25	26	27	28	29	30		23	24	25	26	27	28	29	27	28	29	30				25	26	27	28	29	30	31
							30	31																			

January 2024							February 2024							March 2024							April 2024						
Mo	Tu	We	Th	Fr	Sa	Su	Mo	Tu	We	Th	Fr	Sa	Su	Mo	Tu	We	Th	Fr	Sa	Su	Mo	Tu	We	Th	Fr	Sa	Su
1	2	3	4	5	6	7				1	2	3	4					1	2	3	1	2	3	4	5	6	7
8	9	10	11	12	13	14	5	6	7	8	9	10	11	4	5	6	7	8	9	10	8	9	10	11	12	13	14
15	16	17	18	19	20	21	12	13	14	15	16	17	18	11	12	13	14	15	16	17	15	16	17	18	19	20	21
22	23	24	25	26	27	28	19	20	21	22	23	24	25	18	19	20	21	22	23	24	22	23	24	25	26	27	28
29	30	31					26	27	28	29				25	26	27	28	29	30	31	29	30					

May 2024							June 2024							July 2024							August 2024						
Mo	Tu	We	Th	Fr	Sa	Su	Mo	Tu	We	Th	Fr	Sa	Su	Mo	Tu	We	Th	Fr	Sa	Su	Mo	Tu	We	Th	Fr	Sa	Su
		1	2	3	4	5					1	2	1	2	3	4	5	6	7				1	2	3	4	
6	7	8	9	10	11	12	3	4	5	6	7	8	9	8	9	10	11	12	13	14	5	6	7	8	9	10	11
13	14	15	16	17	18	19	10	11	12	13	14	15	16	15	16	17	18	19	20	21	12	13	14	15	16	17	18
20	21	22	23	24	25	26	17	18	19	20	21	22	23	22	23	24	25	26	27	28	19	20	21	22	23	24	25
27	28	29	30	31			24	25	26	27	28	29	30	29	30	31					26	27	28	29	30	31	

School Holidays	INSET Days	Tutorial Day	Bank Holidays
-----------------	------------	--------------	---------------

2024 Class Assembly Dates

		25/1/24	2JW
1/2/24	6AC	8/2/24	6LM
7/3/24	2LT	14/3/24	1NS
21/3/24	6SB	28/3/24	3KL
2/5/24	5RS	9/5/24	2LS
16/5/24	3NI	23/5/24	5OF
20/6/24		27/6/24	4YH

Class assemblies are on Thursdays at 9.15 and last for approximately 15 minutes. Parents and carers are invited to come along and find out more about their children's learning across the curriculum.

Dates for your Diary

This Term's Events

WB 26.02.24 - Bikeability for Years 3 and 4
28.02.24 – Zoolab visit for Nursery and Years 1 and 2
WB 04.03.24 – Bikeability for Years 5 and 6
07.03.24 – World Book Day – Dress up
07.03.24 – Early Years Celebration Day
22.03.24-28.03.24 – Book Fair in school
28.03.24 – Last day of term
15.04.24 – Inset day
16.04.24 – Children return to school

Spring Term Library Visits

(Please note changes as requested by the library)

	10:20- 11	11:15 - 11:55
Thurs 11 th Jan	3KL	6AC
Fri 12 th Jan	1AM	6LM
Thurs 18 th Jan	1NS	6SB
Fri 19 th Jan	3NI	4BC
Thurs 25 th Jan	2JW	
Fri 26 th Jan	2LT	
Thurs 1 st Feb	2LS	
Fri 2 nd Feb	3/4CB	
Thurs 22 nd Feb	5RS	
Fri 23 rd Feb	5FM	
Thurs 29 th Feb	5OF	
Fri 1 st March	4VG	
Thurs 7 th March	Rainbow	
Fri 8 th March	Moonbeam	
Thursday 14 th March	Sunshine	

News and Reminders

Wellbeing Services Survey

The Gem Federation works in partnership with Groundworks (Southwark Mental Health Support Team) to deliver interventions to children and coaching to parents/carers. Together we would like to assess the awareness and use of well-being services within Southwark, with the hopes of then using this data to guide future service development. We would appreciate if you could click and complete the link below to google docs survey by Friday 1st March 2024.

<https://docs.google.com/forms/d/18MhuYUC7qTZvknz--pEZ0U0PoagoNjHgNpMZj8DT1iQ/edit>

Scratch Competition

Don't forget to take part in our exciting Scratch Competition, organized by our computing ambassadors. Use this link to get started <https://scratch.mit.edu/> and check the letter which was sent home last half term and which is attached at the end of this newsletter for a reminder of how to take part. The competition is open until March 8th.

Empathy Week

Next week is Empathy Week. We will be watching a Big Live Assembly on the theme of empathy on Tuesday and will be focusing on our core value of being Self-Aware and Supportive throughout the week.

There is also a competition organised by the Sanctuary Foundation for children in Key Stage Two. Children can enter empathy related poetry or art work and the best entries will be displayed in The British Museum. Please follow this link for more information: <https://sanctuaryfoundation.org.uk/art/>

Children can submit entries by bringing them to school and giving them to Miss Beeton or Ms McPherson via the school office by 20th March.

Key Stage One Gates

We have received some queries about the times at which Key Stage 1 gates are closed in the mornings.

The main KS1 gate and the courtyard gates will all be opened at 8.50am. The expectation is that all children are in their classroom by 9am so they should be arriving at the main gate by 8.55am.

The main gate and courtyard gates are then closed at 9.05am. This means that all parents and carers need to have left the premises before this time. Children who arrive at the main gate at, or after 9am will be asked to say goodbye to parents and carers at the gate to ensure that the gate can close on time and that this is not delayed by waiting for adults to leave. Children arriving after 9.05am will need to go to the school office. It is really important that all children are on time for school to ensure that they do not miss out on important learning which starts promptly at 9am, or disrupt lessons for other children.

Nature Garden Visits

While the weather is wet the nature garden can become very muddy. If at all possible, please provide your child with wellies (or spare shoes and socks if wellies are not possible) for their nature garden session, particularly if your child is in Key Stage 1.

Sports Clubs

Please see the flyers at the end of the newsletter for details of accessible local sports clubs.

A Message for Bessemer Dads, from Bessemer Dads!

We have a Bessemer Dads cricket team who play 5-6 fixtures each summer against the parents of other local schools. Most of us hadn't played for 10-15 years prior to signing up so the quality is patchy, but we've still managed 5 wins from 7 games. More importantly, it's a lot of fun with a heavy emphasis on the social aspect of the game. However, we do often struggle to get 11 players on the pitch, so if you've played in the past and are keen to join the squad, please contact Tom Morris on 07583 214063 and he'll add you to our WhatsApp group.



World Book Day 2024



On **Thursday 7th March**, we will be joining the world in celebrating 'World Book Day'.

Here are the things we will be doing to celebrate in school:

Assembly

7th March, World Book Day Assemblies

(Competition Winners and performance from Gothic Literature Club)



Competitions: The deadline for entries is Friday 1st March

KS1- Design your own Imaginary Land and describe it. Children will be given a sheet to draw a picture of an imaginary land with space underneath to write a description of it to transport readers into their imaginative world. Children can use exciting adjectives, alliteration and think about their 5 senses to help them spark a reader's imagination.

KS2 – Suspense Paragraph. Write an exciting and captivating opening to a story using no more than 3 sentences. The introduction needs to be gripping and exciting so that it captures the reader's imagination. Children are encouraged to explore the PowerPoint on Google Classroom for help and inspiration.

Entries should be handed in to the class teacher to send to the office. There will be prizes for the best entries.

Dress up:

On the 7th March all Staff and children dress up as their favourite book character.

Book Prizes will be given to the most creative costume in EYFS, KS1, Lower KS2, and Upper KS2

F@B Event 7th and 8th March – Book Drive

Children are invited to choose a free book to take home.

Reading Buddies

On the day of World Book Day, we will be pairing year groups together so the older children have a 20 min read with the younger children.

Reading Online Events:

Here are the links to pre-recorded and live events that we will be using in school:

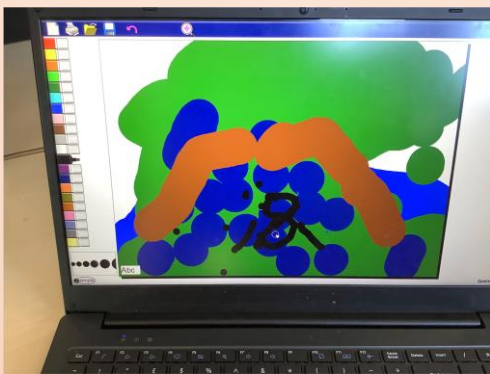
<https://www.worldbookday.com/events/https://shop.scholastic.co.uk/scholastic-live-world-book-day>



Sharing Children's Learning

This week we are sharing some examples of children's learning in Early Years:

Rainbow class were using 2simple software to create pictures of The Three Billy Goats Gruff:

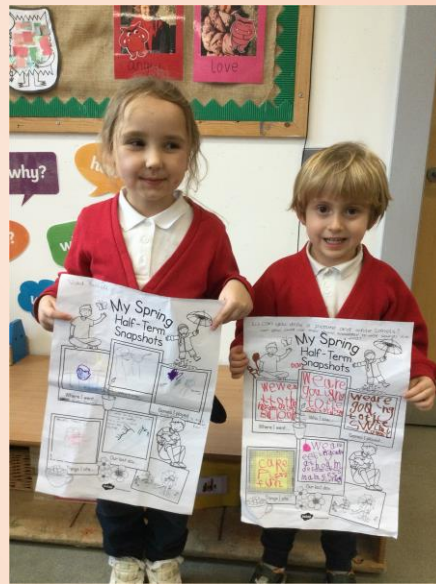
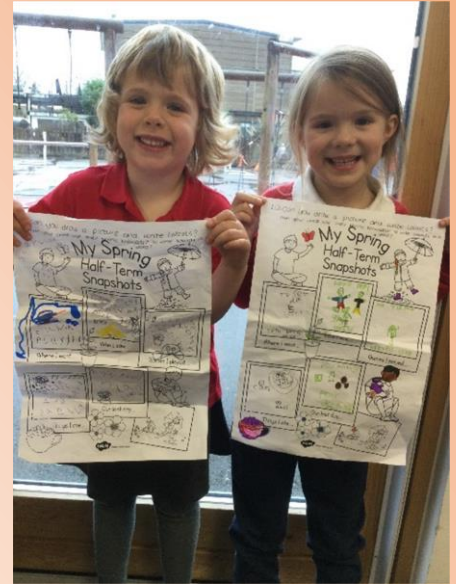


Children in the outside area got creative with loose parts construction:



Sharing Children's Learning

Some Reception children brought in great examples of home learning:



Some Reception children took part in Bikeability sessions, learning early cycling skills:



Word of the Week

This week's word of the week was **nurture** (meaning *to care for and protect, particularly while something is growing, e.g. the plant grew taller as Ali nurtured it*). Well done to everyone who worked it out from the clues! Please work with your child to decipher the clues below in order to work out next week's word of the week. If your child can guess the word of the week and tell their teacher on Monday they will get a gem. The word will be revealed on Tuesday this week so that children can then use it throughout the rest of the week and will be shared on the newsletter on Friday, along with the next set of clues.

The clues for next week's word:

Where to find it – Find me under 'm' (noun)

What it means - lots of tiny water droplets hanging in the air like fog.

When to use it – The dense _____ fell over the fields.

Bonus clue - This word is a homophone.

Good luck!

F@B Update

Celebrating World Book Day: the Bessemer Big Book Giveaway

As part of World Book Day celebrations in early March we are planning a fantastic book giveaway event so that every Bessemer pupil can pick a book that they would like to take home and keep.

We need your books! Our biggest need is for kids' chapter books (as many as possible please!) and some picture books would be lovely too.

Please bring your books in to the school office next week (by Friday 1 March). We can accept donations right up until World Book Day but it helps to have the bulk of them in sooner to sort and arrange them - thank you



We hope you can support this event - it's a lovely way to celebrate world book day and support all the kids to grow their enjoyment of reading.

F@B meet the parents events

Thanks so much to all the lovely parents who came along to our meet-up at school today.

Another event is planned for next Monday! Please do come along to The Cherry Tree pub 7.30-9.00 on Monday 26 February for a chance to have an informal chat about F@B, get to know other parents and find out more about the work of our parent teacher association in supporting the school and Bessemer families. We're always keen to involve more people, to hear your ideas and fundraising and to strengthen the school community.

Here's a quick reminder of 2 simple ways to support F@B:

Make a donation: If you'd like to help you can give online - either a one-off or join the families making a monthly donation - at People's Fundraising: <https://www.peoplesfundraising.com/donation/friends-at-bessemer>

Join our friendly WhatsApp group: <https://chat.whatsapp.com/Ld4xuFj6Gzi3QQetELlaf7>

Online Safety Tip of the Week

Smart Speakers

More and more households own smart-speakers, but what conversations should we be having with children about how to use them safely and responsibly?

The UK Safer Internet Centre has compiled a guide with advice surrounding talking to children about responsible use of smart speakers, what to do if something upsetting or worrying happens and how to set parental controls on different devices.

<https://saferinternet.org.uk/guide-and-resource/parents-and-carers/smart-speakers>





Celebrations!

Certificates

	Star	Writer	Mathematician	Presenter	Scientist
Rainbow	Storm	Felix	Amir		
Sunshine	Felix	Isaac	Arlo S		
Moonbeam	Lenny	Maseyr	James		
1AM	Josiah	Blessing	Leon	Eve	Lariah
1NS	Arthur	Freddie	Samiya	Adonai	
2JW	Yaseerah	Johnny	Dougie	Taylan	
2LS	Ellie Mae	Louie	Humaira	Lucas	
2LT	Aidan	Ava	Stephany Evie	Margot CG	
3KL	Mikey	Shackleton	Phoenix S	Fred	
3NI	Rene	Maia	Vidak	Zafer	Jacob
3/4CB	Elijah	Millie-Rose	Joel	Salome	
4BC	Abemelek	Noah	Billy	Olia	Amelia
4VG	Tariq	Luciano	Cruize	Tobias	
5RS	Andrea	Bryan	Tayo	Izzy	
5OF	Akila	Ruby	Arda	Ozgur	
5FM	Gabriel	Rayanne	Stephen	Neron	Ezekiel
6LM	Amani	Naomi-Rose	Iona	Freya	Lekha
6SB	Jake	Khadijah	Marley	Jade	
6AC	Abdulai	Cyra	Ainoa	Allegra	

Individual Timestable Rockstars

Year 1	Year 2	Year 3	Year 4	Year 5	Year 6
Hamilton	Rayha	Kebreab	Esme	Johanna	Khadijah

Timestable Rockstars Winning Classes:

Half term competition winners 2LS! Well done 2LS, you get 10 minutes extra play!

House Winners	Diamonds!
------------------	------------------



Have a great weekend!

Elizabeth



RELEASE YOUR POTENTIAL

JOIN SOUTHWARK RUGBY CLUB

Training every Sunday September - April
Boys & Girls 5 - 17
No experience necessary

Join us 10.00 - 12.00 at our pitches
in Burgess Park - SE5 0JB

Info: chris@southwarktigers.com

www.southwarktigers.com

IWO'24

International Women's Day Youth Football Festival

Saturday 2 March 2024

PLAY LIKE A GIRL SESSION

Cost: Free!

Time: 10:00-11:30

Location: Alleyn's School

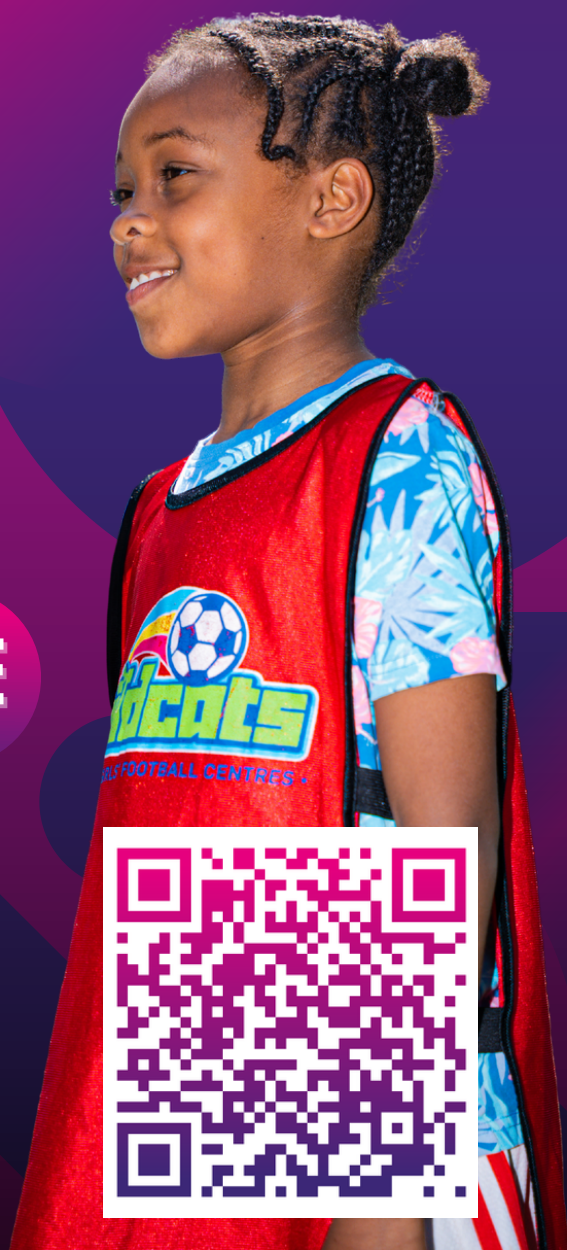
Age group: 5-11

Level: All abilities

BOOK HERE



GIRLS UNITED





Bessemer Primary School

Part of The Gem Federation

www.thegemfederation.co.uk

Executive Headteacher: Sarah Beard

Address: Dylways, London, SE5 8HP

Email: office@bessemergrange.southwark.sch.uk

Telephone: 020 7 2742520

Head of School: Elizabeth Whitehead

Scratch Programming Competition



Dear Parents and Carers,

The **Bessemer Computing Ambassadors** would like to set a competition to encourage the school community to get involved in creating some fun projects using Scratch.

Scratch is a free resource that you can access at home, either online (an adult would need to supervise setting up a login using an email for this) or by downloading a free app. There is a link below if you wish to find out more about how the Scratch community works to keep children safe while interacting online.

On the web version there are lots of tutorials and guides for making projects – you can even ‘remix’ projects made by other ‘Scratchers’ – and these will be accepted in the competition if the judges (our Computing Ambassadors) can see that the remixed version is changed sufficiently! You are also encouraged to work with your child in making their projects – they can show you some of the things they enjoy making and playing or have been learning in school.

Online Version: <https://scratch.mit.edu/>

Parent and guardian’s guide to Scratch: <https://medium.com/scratchteam-blog/a-parents-and-guardians-guide-to-scratch-3f0b96e35fc3>

Download the app here: <https://scratch.mit.edu/download>

Competition Details:

Years 2-4: Create an animation or a simple game in Scratch – e.g. a maze game or chasing /dodging game

Years 5-6: Create a more complex game – e.g. multi-level, platform, clicker game

Year 1: *Slightly different as this group will not have as experience with Scratch yet in school.* Their competition task is to combine words and images digitally (E.g. using a ‘Paint’ app) – perhaps about a favourite story character, place or family member.

How to submit your project:

Login to your child’s Google classroom. Find ‘Computing Competition’ as an assignment in ‘Classwork’

Paste the link (for the web version) / upload the file (if the project was made in an app)

Deadline: 8th March The winners (1 per year group) will be announced before the Easter holiday.

Warm regards,

Alison Clark