

# Bessemer Primary School Newsletter



**Part of The Gem Federation**

[www.thegemfederation.co.uk](http://www.thegemfederation.co.uk)

**Executive Headteacher:** Sarah Beard

**Address:** Dylways, London, SE5 8HP

**Email:** [bessemer@gemfed.co.uk](mailto:bessemer@gemfed.co.uk)

**Telephone:** 020 7274 2520

**Head of School:** Elizabeth Whitehead

## Dates for your Diary

**Friday 15<sup>th</sup> November 2024**

### Term Dates 2024-25

September 2024	October 2024	November 2024	December 2024
Mo Tu We Th Fr Sa Su	Mo Tu We Th Fr Sa Su	Mo Tu We Th Fr Sa Su	Mo Tu We Th Fr Sa Su
1	1	1	1
2 3 4 5 6 7 8	2 3 4 5 6 7 8	2 3 4 5 6 7 8	2 3 4 5 6 7 8
9 10 11 12 13 14 15	9 10 11 12 13 14 15	9 10 11 12 13 14 15	9 10 11 12 13 14 15
16 17 18 19 20 21 22	16 17 18 19 20 21 22	16 17 18 19 20 21 22	16 17 18 19 20 21 22
23 24 25 26 27 28 29	23 24 25 26 27 28 29	23 24 25 26 27 28 29	23 24 25 26 27 28 29
30	30 31	30	30 31
January 2025	February 2025	March 2025	April 2025
Mo Tu We Th Fr Sa Su	Mo Tu We Th Fr Sa Su	Mo Tu We Th Fr Sa Su	Mo Tu We Th Fr Sa Su
1 2 3 4 5	1 2	1 2	1 2 3 4 5 6
6 7 8 9 10 11 12	3 4 5 6 7 8 9	3 4 5 6 7 8 9	7 8 9 10 11 12 13
13 14 15 16 17 18 19	10 11 12 13 14 15 16	10 11 12 13 14 15 16	14 15 16 17 18 19 20
20 21 22 23 24 25 26	17 18 19 20 21 22 23	17 18 19 20 21 22 23	21 22 23 24 25 26 27
27 28 29 30 31	24 25 26 27 28	24 25 26 27 28 29 30	28 29 30
May 2025	June 2025	July 2025	August 2025
Mo Tu We Th Fr Sa Su	Mo Tu We Th Fr Sa Su	Mo Tu We Th Fr Sa Su	Mo Tu We Th Fr Sa Su
1 2 3 4	1	1 2 3 4 5 6	1 2 3
5 6 7 8 9 10 11	2 3 4 5 6 7 8	7 8 9 10 11 12 13	4 5 6 7 8 9 10
12 13 14 15 16 17 18	9 10 11 12 13 14 15	14 15 16 17 18 19 20	11 12 13 14 15 16 17
19 20 21 22 23 24 25	16 17 18 19 20 21 22	21 22 23 24 25 26 27	18 19 20 21 22 23 24
26 27 28 29 30 31	23 24 25 26 27 28 29	28 29 30 31	25 26 27 28 29 30 31
	30		
<div>School Holidays</div> <div>INSET Days</div> <div>Tutorial Day</div> <div>Bank Holidays</div>			

### This Year's Class Assembly Dates

Class assemblies take place at 9.15 am on Thursday mornings and last for about 15 minutes. Parents and carers are invited to come along and watch their children present their learning from their half termly topic.

Years 1,2 and 3		Years 4,5 and 6	
Thursday 21 <sup>st</sup> November	1NS	Thursday 28 <sup>th</sup> November	5FM
Thursday 30 <sup>th</sup> January	3/4BW	Thursday 6 <sup>th</sup> February	6LM
Thursday 13 <sup>th</sup> February	2SD	Thursday 13 <sup>th</sup> March	6MS
Thursday 20 <sup>th</sup> March	2LT	Thursday 27 <sup>th</sup> March	4BG
Thursday 3 <sup>rd</sup> April	3LS	Thursday 8 <sup>th</sup> May	5RS
Thursday 15 <sup>th</sup> May	3NI	Thursday 22 <sup>nd</sup> May	4GS
Thursday 5 <sup>th</sup> June		Thursday 12 <sup>th</sup> June	6SB
Thursday 19 <sup>th</sup> June	1ST	Thursday 26 <sup>th</sup> June	5OF
Thursday 3 <sup>rd</sup> July	1JM		

## Dates for your Diary

### Upcoming Events for the Autumn Term

26.11.24 – Online safety workshop for parents and carers, 5-6pm  
03.12.24 - Year 5/6 reading workshop for parents, 9.15am – change of date  
03.12.24 – Year 5 *A Christmas Carol* workshop in school  
06.12.24 – Year 1 theatre trip  
09.12.24 – 3LS and 3/4BW trip to The Natural History Museum  
09.12.24 – Year 6 Junior Citizens trip  
10.12.24 – Reception Christmas performance  
11.12.24 – Reception Christmas performance  
13.12.24 – 3NI, 4BG and 4GS trip to The Natural History Museum  
14.12.24 – Winter fair, 12-3pm  
16.12.24 – Year 1 and 2 carols, 3pm  
17.12.24 – Year 3/4 carol concert at St Faith's, 5.30pm  
18.12.24 – Nursery carols, 3pm  
18.12.24 – Year 5/6 carol concert at St Faith's, 5.30pm  
18.12.24 – Children's Christmas lunch  
19.12.24 – Class parties  
20.12.24 – Last day of term, 2pm finish

### Autumn Term Library Visits

Each term every class has the opportunity to visit Grove Vale library. Children spend some time exploring the library, younger children often have a story session and then all children borrow a book to bring back to school with them. If you are able to accompany your child's class on their library visit please speak to their class teacher.

Date	10:20- 11am	Date	10.20-11am
Thurs 19 <sup>th</sup> September	6LM	Thurs 24 <sup>th</sup> October	3LS
Fri 20 <sup>th</sup> September	6MB	Fri 25 <sup>th</sup> October	2LT
Thurs 26 <sup>th</sup> September	6SB	Thurs 7 <sup>th</sup> November	2SD
Fri 27 <sup>th</sup> September	5RS	Fri 8 <sup>th</sup> November	1JM
Thurs 3 <sup>rd</sup> October	5FM	Thurs 14 <sup>th</sup> November	1NS
Fri 3 <sup>th</sup> October	5OF	Fri 15 <sup>th</sup> November	1ST
Thurs 10 <sup>th</sup> October	4GS	Thurs 21 <sup>st</sup> November	Moonbeam
Fri 11 <sup>th</sup> October	4BG	Fri 22 <sup>nd</sup> November	Rainbow
Thurs 17 <sup>th</sup> October	3/4BW	Thurs 28 <sup>th</sup> November	Sunshine
Fri 18 <sup>th</sup> October	3NI	Fri 29 <sup>th</sup> November	Ladybird
		Thurs 5 <sup>th</sup> December	Butterfly



## News and Reminders

### **Children with Allergies**

Thank you to the parents and carers who have responded to our questionnaire about provision for children with allergies. We are aware that there is a lack of clarity over some elements of our provision and I have had a number of meetings with our catering company this week and am now working very closely with them to resolve the issues raised.

The first thing that we have addressed is the procedure in place at lunchtime for children with allergies, which we have clarified and is as follows:

- Children with a medically diagnosed food allergy wear an allergy lanyard at lunchtime and are provided with a special menu, as agreed between their parents / carers and the catering company. This means that each day their meal will be plated separately and labelled with their name. The only exception to this is for children with a nut allergy; while they will wear an allergy lanyard at lunchtime, as the entire kitchen is nut free they are free to choose from the full menu. Special menus are only available to children after medical evidence of their allergy has been provided to the catering company. If you are unsure about whether your child needs a special menu please contact the school office for clarification.
- Children who do not have medical evidence of an allergy will not wear an allergy lanyard at lunchtime and are not eligible for a special menu. Allergens are listed on the school menus on the school website, so parents / carers can advise their children on what they would like them to eat each day based on food preferences and lower level intolerances. However, from time to time menus are changed at short notice, so if your child is likely to suffer a reaction from consuming an allergen it is essential that you seek medical evidence for this so we can provide a special menu.

Children who are vegetarian, pescatarian or vegan will wear a different coloured lanyard at lunchtime and will be directed to the appropriate options on the main menu.

We are now working on the provision available in After-School Club for children with food allergies and we will share an updated menu as soon as possible.

### **Homework**

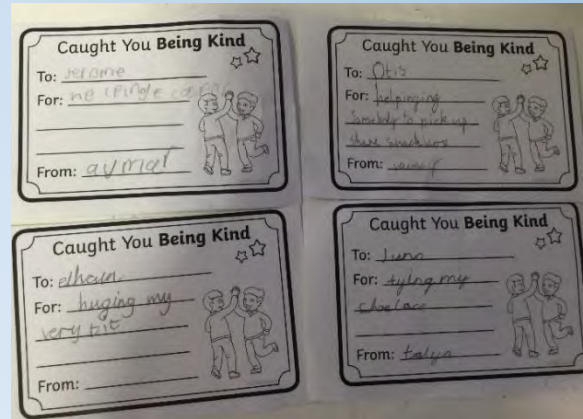
At Bessemer we provide a number of resources for home learning, however we know how busy family life is and there is no expectation that you access them all! Here is a breakdown of the provision available and the expectations around this:

<b>Home Reading</b>	We expect all children to read daily and parents and carers to complete reading diaries. Home reads are rewarded with stickers and certificates. Letters are sent home if children do not complete enough reads each half term.
<b>KS2 Maths Homework</b>	This is based on the key skills that children need to know each year and is intended to provide additional practice of the skills taught in class. It is not compulsory, but encouraged. It is not handed in or marked, however it is a good resource to use if you want to practice maths skills at home as it is matched to learning in school.
<b>Spellings</b>	We teach spellings in school three times a week and we send the weekly words home so that you can practice them.
<b>Timestable Rockstars</b>	We encourage children to practice their multiplication and division knowledge using Timestable Rockstars; The weekly 'Rockstars' are announced in assembly and rewarded with stickers for individuals and treasure chests for classes.
<b>Half Termly Topic Homework</b>	This is not compulsory but encouraged and children are rewarded with gems if they bring homework in to share with their class.
<b>Year 6 Homework</b>	To prepare for secondary school homework in Year 6 becomes compulsory when the SATs revision guides are given out and children are asked to complete it at playtime if they have not done it at home.

## News and Reminders

### Anti-Bullying Week

This week was anti-bullying week. In PSHE lessons children completed anti-bullying activities and focused on our core value of being Self Aware and Supportive. On Tuesday we all wore odd socks to school to celebrate individuality and uniqueness and we held anti-bullying assemblies around this year's theme *Choose Respect*.



### Children in Need

We dressed up in yellow or spots (and some stripes!) in support of Children in Need today. Thank you to everyone who made a donation, we will announce how much we raised next week when we finish counting!



### Design a Christmas Card Competition

Helen Hayes, the MP for Dulwich and West Norwood has invited Bessemer children to enter a competition to design her Christmas card. The winning design will be used on Christmas cards sent out by Helen to a wide group of parliamentarians and other people across her constituency and the competition winner will be credited for the design on the card.

The Christmas card will be A5 in size, but designs can be reduced so can be drawn on A4 paper. In order to make sure that the designs reach Helen's office in time for the selection process we need all entries to be handed in to the school office on Monday, so you only have this weekend to get creative! Please make sure that you write your child's name and school on the back of their design.

### Smart Watches

Children are not allowed to wear Smart watches, or similar to school. This includes any watch with messaging or recording functions.

### Headlice

Thank you to everyone who checked and treated for headlice following my last message. In order to keep headlice away, we advise everyone to nit comb their children's hair regularly, e.g. every time it is washed.

### Messages From JAGS

JAGS is offering a Christmas Holiday Day Camp on 2<sup>nd</sup> and 3<sup>rd</sup> January. Find out more here:

<https://jagssportsclub.co.uk/jags-kids/>

JAGS is also hosting a live music and spoken word event for adults on 7<sup>th</sup> December, if parents are hoping to get together before Christmas – details can be found here:

<https://www.eventbrite.co.uk/e/under-the-christmas-tree-tickets-1067416685039?aff=oddtcreator>



## Sharing Children's Learning

### **Demonstrating our core values of being *Creative and Practical* and *Connected to the Community***

This week it was Early Years' turn to host a Celebration Morning. Nursery and Reception parents and carers were invited to join their children in school on Wednesday. First the adults joined the children in class to watch a demonstration carpet session, modelling the use of phonics and reading strategies. Then everyone had a great time exploring the indoor and outdoor learning environments and taking part in activities together. We asked parents and carers what they found the most useful about the morning, these are some of the responses:

The reading presentation and ideas for learning at home, like role play.



Seeing how they teach phonics and reading whole sentences.

Watching the phonics / reading demonstration, seeing how they blend sounds and read words.

(learning about) 'duck hands' and being able to experience my child's learning experience in and outside with him.



Seeing my child developing with his confidence and learning. He loves reading and being able to make friends.

The idea of book talk to help the child get an idea of the book and improve understanding and their imagination.

Really lovely to see the children enjoying the activities, some good ideas to try at home!

I appreciated being with my child in his environment and doing activities with him, it was nice.

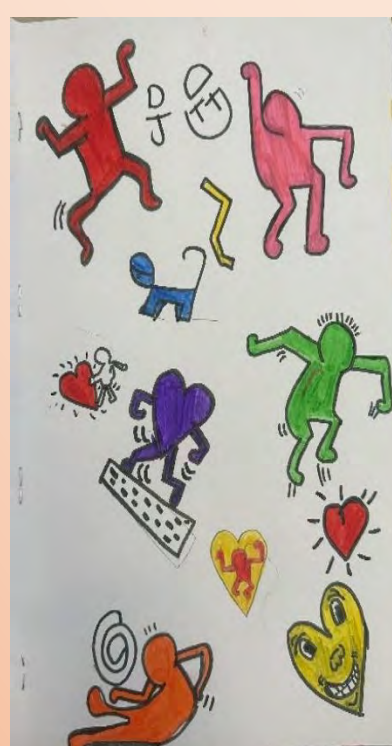




## Sharing Children's Learning

### **Demonstrating our core value of being *Creative and Practical***

Children across the school took part in The Big Draw this week. This is a world-wide festival of drawing and this year's theme was *Drawing in Motion*. Here are some outcomes from across the school:





## Sharing Children's Learning

### **Demonstrating our core value of being *Creative and Practical***

Children in Year 5 enjoyed a trip to The Museum of London. Docklands this week as part of their Victorians and The Industrial Revolution topic. The children had a great time learning about the Victorians around the museum and in a hands-on workshop where they explored Victorian artefacts.

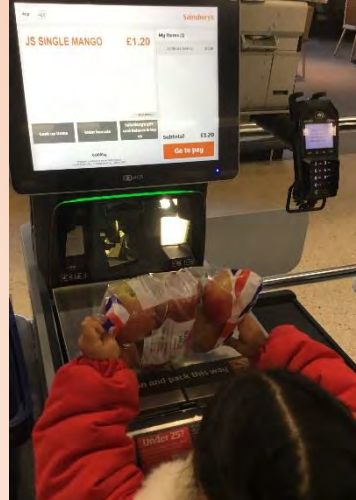




### Sharing Children's Learning

#### **Demonstrating our core values of being *Creative and Practical* and *Connected to the Community***

As part of their topic *A Taste of The World*, Nursery children went to Sainsbury's to buy some fruit from around the world, then came back to school to taste it!



This week was the final week of Bikeability, with children in Year 6 learning how to check that their bikes are road-worthy and then taking to the roads:





### Word of the Week

The Word of the Week next week is **vague**. Please help your child to find out the meaning of the word and try using it in different ways in sentences. You could add a suffix to make a new word, **vaguely**. You could also research the origins of the word and see if you can think of any related words with the same origin.

Try to use the word of the week as much as possible so that it becomes part of your child's vocabulary. Children will receive gems in school for using the word in their speech and writing and for explaining its meaning and origin.

### F@B Update

One month to go until our Winter Fair!  
Saturday 14 December from 12-3pm.

Join us for live music, bouncy castle, games, popcorn, delicious food, crafts, teddy tombola and lots more!

Bessemer winter raffle

It's time for our Bessemer Winter Raffle. Grab a ticket for £1 and you could win a prize while supporting F@B to raise money for Bessemer!

<https://www.peoplesfundraising.com/raffle/bessemer-winter-raffle-2024>

There are some brilliant prizes on offer...

You could win restaurant vouchers at The Real Greek, Rocca, Archway and yummy ice cream treats at Oddonos.

Plus whisky, wine, cinema tickets, vouchers for hair salon treats, Dulwich therapy rooms, 3 months family membership at JAGs sports club.... and more!

### Online Safety Tip of the Week

Setting up parental controls and privacy settings on devices your child uses:

Parental controls are the names for a group of settings that put you in control of what content your child can see. Combined with privacy settings, these can help you to protect your child from inappropriate content, online grooming, cyber bullying and other [online safety issues](#).

This website has guides for setting parental controls or privacy settings for different devices, social media and search engines:

<https://www.internetmatters.org/parental-controls/>





# Celebrations!

## Certificates

	Star	Writer	Mathematician	Presenter	Scientist
<b>Rainbow</b>	Reuben	Ayub	Rosie		
<b>Sunshine</b>	Rittal	Ruby	Gabriel		
<b>Moonbeam</b>	William	Liam	Inaya		
<b>1JM</b>	Theo	Angus	Abigail	Daksha	
<b>1NS</b>	T'Mari	Liam	Lev	Celeste	
<b>1ST</b>	Raymond	Olivia	Kassie	Hilal	Alden
<b>2SD</b>	Jeremiah	Laura	Arthur	Leila	
<b>2LT</b>	Nathan	Jhane	Eimi	Rosa	
<b>3LS</b>	Isobel	Genny	Amina	Nathan	
<b>3NI</b>	Kenza	Olivia	Lucas	Eliana	
<b>3/4BW</b>	Finn	Jake	Harrison	Aymar	Agibu / Maya
<b>4BG</b>	Sarah	Eustache	Alex	Ismay	
<b>4GS</b>	Ezra	Leo	Temi	Phoenix S	
<b>5RS</b>	Noah	Abass	Jadon	Freddie	
<b>5OF</b>	Sam	Runaah	Alkyoni	Olivia	
<b>5FM</b>	Amelia	Salima	Remy	Isabella	Harry
<b>6LM</b>	Bryan	Polly	Camai	Isaac	
<b>6SB</b>	Akila	Lucy	Eve	Alex	Sophie
<b>6MS</b>	Einas	Fayo	Stephen	Finn	

## Individual Timestable Rockstars

Year 1	Year 2	Year 3	Year 4	Year 5	Year 6
Isaac	Georgios	Jose	Agnes R	Olivia	Ruby N

## Timestable Rockstars Winning Classes

Key Stage 1	Lower Key Stage 2	Upper Key Stage 2
1ST	3NI	5OF

House Winners	<b>Sapphires!</b>
------------------	-------------------



Have a great weekend!

*Elizabeth*





Childnet

# Online Safety

workshop

for parents and carers

## Top Hall

Tuesday November 26<sup>th</sup>

5pm-6pm

*All Welcome!*

# Autumn Term 2 Timetable

## Monday 4<sup>th</sup> November - Friday 20<sup>th</sup> December 2024

All sessions are free to attend


Dulwich Wood Children and Family Centre Lyall Avenue, London SE21 8QS					Crawford Children and Family Centre Crawford Road, Camberwell SE5 9NF				
Monday 9:45am-11:15am Baby Group (0-18 months)  1:30pm-3pm Stay and Play (0-5 years)	Tuesday 10am-11:30am Bookstart (0-5 years)  1:30pm-3pm Baby Giggles and Wiggles (0-2 years)	Wednesday 1:30pm-2:30pm Chattertime Plus (2-5 years)	Thursday 10am-11:30am ToddlerTime & Early Words Together (2-5 years)  1:30pm-3pm SENsational Play (0-5 year)	Friday 10am-11am Move and Groove (0-5 years)  Saturday 10:30am-12pm Baby Giggles and Wiggles (0-2 years) *16 <sup>th</sup> Nov only	Monday 1:30pm-2:30pm Stay and Play & Early Words Together (0-5 years)	Tuesday 10am-11:30am Bookstart (0-5 years) Camberwell library  10am-12pm Breastfeeding café *last arrival at 11:30am  1pm-3pm ESOL *Term time only	Wednesday 10am-12pm EPEC- Being a Parent *Referrals only  1:30pm-3pm Baby Group (0-18 months)	Thursday 10am-12pm Health Visitor (0-2 years) *last arrival at 11:30am  10:30am-11:30am Stay and Play (0-5 years)  1:30pm-3pm Stay and Play (0-5 years)	Friday 1pm-2:30pm Yoga for Parents Wellbeing *referrals only
Additional Sessions Booking is Required for these sessions			Albrighton C&F Centre 37 Albrighton Road, London SE22 8AH		The Grove Children and Family Centre Tower Mill Road, London, SE15 6BP				
Friday 15 <sup>th</sup> & 29 <sup>th</sup> November: Let's Talk 10:00am-11:30am *Dulwich Wood Thursday 21 <sup>st</sup> November: Henry Starting Solids 1:00pm-3:00pm *Dulwich Wood Thursday 12 <sup>th</sup> December: Henry Starting Solids 1:00pm-3:00pm *Crawford Centre Thursday 28 <sup>th</sup> November: Story time at the Gallery 1:30pm-2:30pm (0-5 years) *Dulwich Picture Gallery			Wednesday 10am-11:30am Stay and Play (0-5 years)  1pm-2:15pm Chattertime (2-5 years)	Friday 10am-11:30am Bookstart (0-5 years)	Monday 1:30pm-3pm Baby, Me & Wellbeing (0-2 years)	Tuesday 10am-11:30am Stay and Play (0-5 years)	Thursday 10am-11:30am SENsational Play (0-5 years)		

Find Out more!

We can provide you with Foodbank  
  
Rose Voucher Collection days are Monday from 9am-12pm & 1pm-3pm & Thursday from 1pm-3pm at Our Crawford Centre.

Live in Southwark and have a child under 5 register for a monthly free book till their 5<sup>th</sup> birthday: [Imaginationlibrary](https://50thingstodo.org/)  
  
<https://50thingstodo.org/>

**Family Support & Advice Session:**  
Book in a face-to-face or phone call appointment to get advice and support on any well-being queries you may have: email us at: [cdcfcoffices@dulwichwood.com](mailto:cdcfcoffices@dulwichwood.com)

**Free Soft Play and Sensory room:**  
Come along to our sessions at The Grove to enjoy our soft play and sensory rooms.  


Facebook: @CamberwellandDulwichcfc

Web: <https://www.dulwichwood.com/aardvarkcc/>

Twitter: @C D cfc

Email: [cdcfcoffices@dulwichwood.com](mailto:cdcfcoffices@dulwichwood.com)

Instagram: c d cfc

Phone: 020 7525 2017

Session description on back.



### Baby Group:

Play singing and sensory activities to stimulate your baby.

### Stay and play:

Come and play and get tips and ideas for learning through play.

### Bookstart:

Activities supporting literacy using puppets and props to make story time fun and engaging.

### Chattertime Plus:

A stay and play group tailored to support children with complex communication needs who have difficulties in several areas of communication, such as attention, social interaction, behaviour, understanding language and talking.

### SENsational Play:

Come and Play and get weekly tips and ideas for learning through play for children with additional needs.

### ChatterTime:

A Stay and Play group to help support your child's Speech and Language.

### Move and Groove:

Come play and get tips and ideas for learning through play at our structured music and singing sessions with instruments and props.

### Stay and Play / ToddlerTime & Early Words Together:

Come and play and get tips & ideas for learning through play and build up your confidence in supporting your children's communication, language and Literacy skills.

### Breastfeeding Café:

Drop in for advice and support for any of your breastfeeding concerns.

### Baby, Me & Wellbeing:

Get advice and information, chat make friends in a safe, supportive and fun space for you and baby. With creative activities for your little ones

### Baby Giggles and Wiggles:

Join our Giggles and Wiggles Group for babies aged 0-2 years this stay and play session promotes well-begin with songs, music, and sensory play, plus guidance on helpful parent resources.

### Yoga for Parents Well-Being:

A 8-week group where you can learn the tools to manage stressful and challenging emotions.

### EPEC Being a Parent:

A 9-week course to help parents to learn practical skill for everyday life.

Story tots and Plant pots:

Activities supporting literacy using puppets and props to make story time fun and engaging.

### Storytime at the Gallery:

Spark you child's imagination through playful painting that stimulates your child's development and curiosity.

### ESOL:

Develop your English language skills and get a recognized ESOL qualification. For parents with children aged 0-5 years. A Creche is provided.

### HENRY Starting Solids:

A starting solids workshop that will help you decide: When your baby is ready to try solid food What foods to start with and more.





# PARENT WORKSHOP

DOES IT EVER FEEL LIKE YOUR  
CHILD'S EMOTIONS GET TOO BIG TO  
HANDLE, TOO QUICKLY?

NOT SURE  
WHAT TO DO?

COME ALONG FOR A  
SESSION WITH THE  
SCHOOL EP TO FIND OUT  
ABOUT THE ESCALATION  
CYCLE AND HOW TO  
DEAL WITH IT.

AT 9-10AM, WITH TIME  
AFTERWARDS FOR QUESTIONS  
ON TUESDAY 19TH NOVEMBER



# SOUTHWARK JAGUARS GIRLS FOOTBALL CLUB

Looking to start your football journey?  
Looking for a new challenge?  
Looking to make new friends?

## Who we are...

Southwark Jaguars are the newest and fastest growing girls football team in Southwark.

Established in 2023 we currently have over **80** girls signed across 6 different teams from U9 to U12.

All teams train on a **Monday (17:00 - 18:00)** at Burgess Park Astro Turf. This is also where we play our home games on a Sunday as part of the Tandridge League.



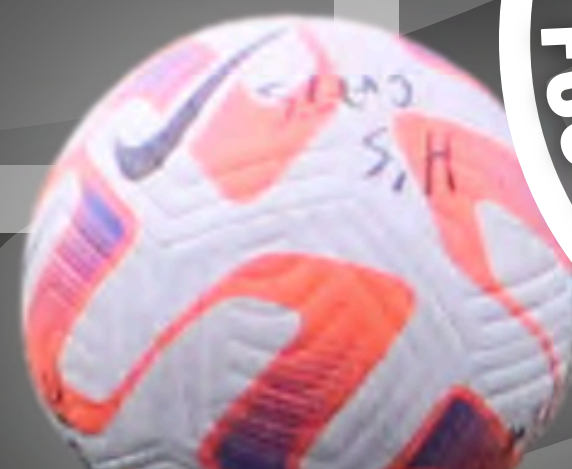
## Interested in joining? What to do next...

- Scan the QR code on the left hand side.
- You will be redirected to our website. Please complete the form in full.
- You will then be contacted by a member of our team with more details.

Do not hesitate to contact either Wilson Frimpong (wilson@lpessn.org.uk) or Joe Howard (joe@lpessn.org.uk) for more information.

You can also find us across our social media platforms.

SCAN HERE





START

FOR

LIFE

Make a  
referral

 Making it  
**REAL**

Making it REAL (Raising Early Achievement in Literacy) is an award winning intervention programme that develops children's early literacy by helping parents' create a positive early Home Learning Environment.

Supporting your 3 or 4 year old child's early speaking, reading and writing skills.



Scan here to find out more and make a referral

 Making it  
**REAL**

**HOME  
START**  
Southwark

  
Southwark Family Hubs

  
Funded by  
UK Government

*Southwark*  
Council





### How will it help me?

- Build your knowledge and confidence in helping your child with speaking reading, writing and maths
- Supporting you to create and develop a positive early home learning environment



Most importantly, all the fun and exciting activities will be planned around your child's developmental stage and interests

### What else is included?

- Accessing events in your local community, at your child's nursery or in your local Children and Family Centre
- Resources to deliver fun activities and learning at home



Download the 50 things App

### How its delivered

The programme is mostly delivered in your family home through a series of visits by one of our trained practitioners with parents and children together

Our team of trained Making it REAL practitioners will bring fun and exciting learning into your everyday life at home using resources that are low cost and readily available

