

Bessemer Primary School Newsletter



Part of The Gem Federation

www.thegemfederation.co.uk

Executive Headteacher: Sarah Beard

Address: Dylways, London, SE5 8HP

Email: office@bessemergrange.southwark.sch.uk

Telephone: 020 7 274 2520

Head of School: Elizabeth Whitehead

Dates for your Diary

Friday 8th September 2023

Term Dates 2023-2024

September 2023						
Mo	Tu	We	Th	Fr	Sa	Su
				1	2	3
4	5	6	7	8	9	10
11	12	13	14	15	16	17
18	19	20	21	22	23	24
25	26	27	28	29	30	

October 2023						
Mo	Tu	We	Th	Fr	Sa	Su
						1
2	3	4	5	6	7	8
9	10	11	12	13	14	15
16	17	18	19	20	21	22
23	24	25	26	27	28	29
30	31					

November 2023						
Mo	Tu	We	Th	Fr	Sa	Su
		1	2	3	4	5
6	7	8	9	10	11	12
13	14	15	16	17	18	19
20	21	22	23	24	25	26
27	28	29	30			

December 2023						
Mo	Tu	We	Th	Fr	Sa	Su
				1	2	3
4	5	6	7	8	9	10
11	12	13	14	15	16	17
18	19	20	21	22	23	24
25	26	27	28	29	30	31

January 2024						
Mo	Tu	We	Th	Fr	Sa	Su
1	2	3	4	5	6	7
8	9	10	11	12	13	14
15	16	17	18	19	20	21
22	23	24	25	26	27	28
29	30	31				

February 2024						
Mo	Tu	We	Th	Fr	Sa	Su
			1	2	3	4
5	6	7	8	9	10	11
12	13	14	15	16	17	18
19	20	21	22	23	24	25
26	27	28	29			

March 2024						
Mo	Tu	We	Th	Fr	Sa	Su
				1	2	3
4	5	6	7	8	9	10
11	12	13	14	15	16	17
18	19	20	21	22	23	24
25	26	27	28	29	30	31

April 2024						
Mo	Tu	We	Th	Fr	Sa	Su
1	2	3	4	5	6	7
8	9	10	11	12	13	14
15	16	17	18	19	20	21
22	23	24	25	26	27	28
29	30					

May 2024						
Mo	Tu	We	Th	Fr	Sa	Su
		1	2	3	4	5
6	7	8	9	10	11	12
13	14	15	16	17	18	19
20	21	22	23	24	25	26
27	28	29	30	31		

June 2024						
Mo	Tu	We	Th	Fr	Sa	Su
					1	2
3	4	5	6	7	8	9
10	11	12	13	14	15	16
17	18	19	20	21	22	23
24	25	26	27	28	29	30

July 2024						
Mo	Tu	We	Th	Fr	Sa	Su
1	2	3	4	5	6	7
8	9	10	11	12	13	14
15	16	17	18	19	20	21
22	23	24	25	26	27	28
29	30	31				

August 2024						
Mo	Tu	We	Th	Fr	Sa	Su
			1	2	3	4
5	6	7	8	9	10	11
12	13	14	15	16	17	18
19	20	21	22	23	24	25
26	27	28	29	30	31	

School Holidays

INSET Days

Tutorial Day

Bank Holidays

- 26.09.23 – 3/4CB additional parents' meetings
- 27.09.23 – 3/4CB additional parents' meetings
- 17.10.23 – Parents' evening
- 18.10.23 – Parents' evening
- 20.10.23 – Last day of half term
- 30.10.23 – Children return to school
- 20.12.23 – Last day of term

Please check these dates regularly, as they will be updated throughout the term as events are added.

News and Reminders

Welcome

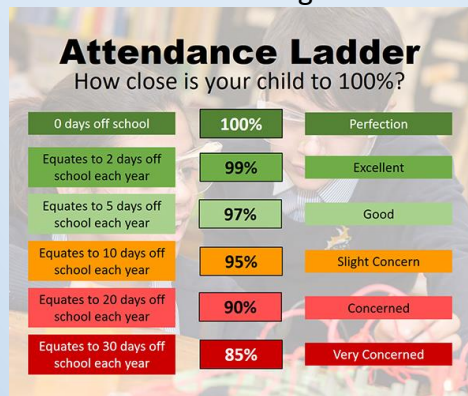
Welcome back everyone and welcome to Bessemer to our new families! It is lovely to see you all again, we hope you all enjoyed the summer and that your children are excited about the year ahead. Please remember that if you or your child has any concerns you can speak to their class teacher at the end of the school day by approaching them at the classroom door, in the playground or at the gate. If you would prefer a longer or more confidential conversation you can also arrange this with the class teacher. If your concerns are urgent and you need to speak to someone before school or during the school day, please contact the school office and a member of the senior leadership team will be happy to give you a call.

New Staff

This year we have welcomed new staff members Najma Ibrahim, who will be teaching Year 3 and Paige Hamlett who will be supporting learning in Moonbeam Class. We have also welcomed back Natalie Rivers who has previously worked at Bessemer and will now be supporting learning in Year 2. We know you will join us in welcoming our new staff to our Bessemer community.

Attendance

Attendance at school is really important to us as it is directly related to children's academic success and wellbeing in school. Our school target for attendance is 96% and each year we aim for all children to meet this target unless there are specific medical reasons that mean this is not possible. Of course, we understand that there will be times when your child is really unwell and needs to stay at home, but please ensure that your child returns to school as soon as they are well enough. Please do not take your child out of school for holidays or events, we are not allowed to authorise term time absence for any reason other than truly exceptional circumstances, and term time absence is very disruptive to children's learning. You can use this attendance ladder to ensure your child's attendance remains above target:



Punctuality

It is really important that your child is on time for school every day. Lessons start promptly every morning and children who are late, even by 5 minutes, miss valuable teaching input and are then likely to fall behind or struggle with the rest of the lesson. All children should be either in their classroom (KS1 and EYs) or in their playground (KS2) before 9am. The gates for different year groups open at staggered times to ensure that siblings in different years can all get to class on time:

- KS2 gates (3/4 and 5/6) open at 8.45am
- KS1 gate and courtyards (Years 1 and 2) open at 8.50am
- Early Years gate (Nursery and Reception) opens at 8.55am

Please drop older siblings off first to ensure that everyone is in class on time.

All gates close by 9.05am at the latest, this is to allow time for KS1 and EYs parents and carers to leave again after dropping their children off, so please allow time for this by ensuring that your EYs or KS1 child is at their classroom door before 9am. When children arrive after the gates have closed this is disruptive for the office staff and for the children's learning, so please arrive in good time.

News and Reminders

Vision and Values

This half term we will be using our weekly PSHE assemblies to recap the values that we introduced last year. We selected these values because we think that they are representative of the things that make Bessemer special and our staff and children are proud to live these values every day.

At Bessemer we are:

Academically Ambitious
We strive to exceed in academic attainment.

We set ambitious goals and expect our students to attain and maintain the highest academic standards they can. For this reason, we regularly review pupil progress to ensure we know how children are developing, so that where necessary, we can support, encourage or intervene to get the very best from every child.

Progressive
We can be the change we want to see around us.

We nurture strong ethical values, integrity and a sense of social justice in our school community and teaching. We want our pupils to become independent thinkers, respectfully questioning convention, challenging inequality and finding their place as considerate individuals who will make a meaningful contribution to society.

Creative and Practical
We learn by doing, in and out of the classroom.

We actively encourage children to engage in the world around them. Our creative curriculum develops every aspect of the child which includes academic, emotional, social, physical, and cognitive skills. Children are immersed in hands-on, practical learning experiences tailored to their developmental stage.

Self-aware and Supportive
We are kind to ourselves and caring of others.

We nurture engagement in learning, positive relationships and greater empathy by helping children develop:

- emotional literacy** - managing their feelings;
- social skills** - being aware of others' emotions;
- resilience** - having the tools to deal with challenges and new things.

Respectful
We are respectful of each other's ideas, beliefs, backgrounds and practices.

We are considerate of the cultural identity and norms of the students and families we serve. Diversity, equality and inclusion are of great importance to us. We strive to support and educate children and adults to be sensitive to and respectful of diversity and put this into action through a socially aware curriculum and inclusive activities.

Connected to the community
We have a strong sense of being a part of and having responsibility for our community.

We recognise that family, school and community relationships directly affect student attainment, therefore we are committed to bringing children, families and communities together in and out of the classroom to share, learn and celebrate the diversity of our city and world.

Your child should be able to give you lots of great examples of ways in which they demonstrate these values every day at school!

Inclusion

Please see the attached flyers from our Inclusion team. You can also visit the inclusion hub on our website for further information and support. <https://www.thegemfederation.co.uk/bessemer-primary/learning-hub/our-curriculum/send/>



Click on a tab to access resources and further information. If you have any resources which could be included in any of our tabs, please email it/them directly to Lori Knight: lknight@keyworth.southwark.sch.uk

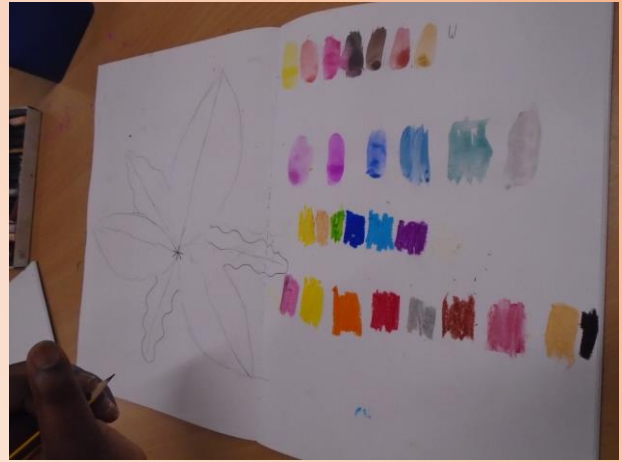
Knowledge Organisers, Topic Homework and Pre Teaching Packs

We have made some changes to our topic homework for this year. Children will now receive a half termly 'Knowledge Organiser' which will include their topic homework alongside lots more useful learning information to allow you to support their understanding of their topic. These will be sent out next week, by email and on paper, with an accompanying letter. Please look out for this and use it at home with your child. While handing in topic homework is not compulsory we do encourage you to do some with your child to develop their learning and any homework that they complete will earn them gems!

In order to make our wider curriculum lessons as accessible as possible for all children, we are introducing pre-teaching packs for some children. Each half term teachers will spend a session going through the packs with the children, explaining vocabulary and concepts before the topic is introduced. The packs will then be sent home with these children so that parents and carers can continue to do so at home. The first pre-teaching packs will be sent home next week, with a letter to explain them further.

Sharing Children's Learning

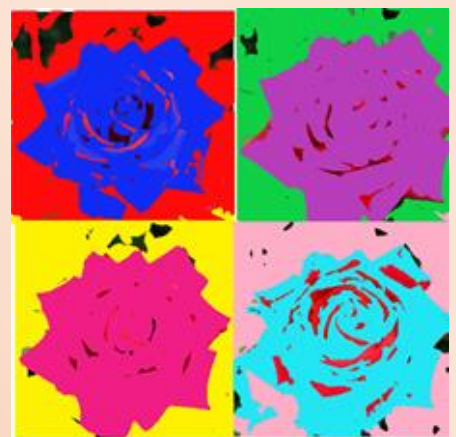
Every September we start the new year with an art project as this is a great way for children to transition back into school and allows time for children to get to know each other and their teachers. This year the theme is *Flower Power*. Here are some examples of the children's work:



Sharing Children's Learning



As well as using a range of art skills and techniques, some children also used their computing skills to generate their art work:



Word of the Week

The Word of the Week next week is **inspire**. Please help your child to find out the meaning of the word and try using it in different ways in sentences. Try adding a different suffix to make a new word, e.g. **inspiring, inspiration, inspirational**. You could also research the origins of the word and see if you can think of any related words with the same origin.

Try to use the word of the week as much as possible so that it becomes part of your child's vocabulary. Children will receive gems for using the word in their speech and writing and for explaining its meaning and origin.

F@B Update

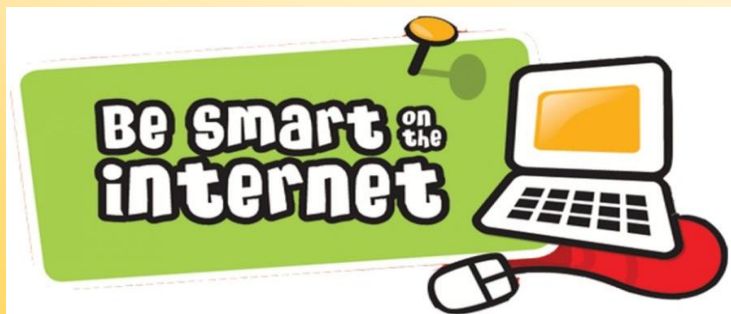
We are running a Back to School uniform and coats sale next Friday 15th September 3:30pm! Come and get some pre-loved uniform and a coat for winter! Our uniform sales are kind to your wallet and the environment. Cards / cash accepted, all proceeds support F@B. Clean high quality donations of uniform and coats much appreciated and can be brought to the stall or dropped in the office next week (no holes / stains please!).

Also next Friday Sep 15th we will be hosting an Ice Cream Friday 🍦☀️ after school and offering you a chance to chat with some of our Friends at Bessemer team. Come enjoy an ice cream and also see how you can get involved in some of our upcoming F@B events.

Online Safety Tip of the Week

If you have been wondering how to talk to your child about ways to stay safe online, you may find this website by Saferinternet.org helpful. It has games and activities suitable for children from the age of 3 through to 11, which are aimed at helping explain some of the potential hazards children should be aware of and shows them strategies to manage those hazards.

<https://saferinternet.org.uk/guide-and-resource/young-people/resources-for-3-11s>



Have a great weekend and enjoy the fabulous weather!

Elizabeth

STRENGTHENING FAMILIES FOR A STRONGER COMMUNITY

Part of the VRU's Community Based Mental Health and
Emotional Well-Being Support Pilot

Session two, part 2:

CBT, ANXIETY

6 - 7:30 pm

September 26th, 2023

At: The Nest

(In person)

Unit 4 Co-Operative House

Rye Lane Peckham

London SE15 4UP

- What is anxiety and why do we experience it
- What signs and symptoms to look out for
- What keeps anxiety going
- How to face your fears using Graded Exposure
- Coping Strategies

OR

12 - 1:30 pm

September 27th, 2023

At: Online (ZOOM)

Travel costs can be reimbursed.
Refreshments and snacks will be served. (IN PERSON SESSION)



STRENGTHENING FAMILIES FOR A STRONGER COMMUNITY

Part of the VRU's Community Based Mental Health and
Emotional Well-Being Support Pilot

Session one, part 1:

CBT, LOW MOOD AND DEPRESSION

6 - 7:30 pm

September 19th, 2023

At: The Nest

(In person)

Unit 4 Co-Operative House

Rye Lane Peckham

London SE15 4UP

OR

12 - 1:30 pm

September 20th, 2023

At: Online (ZOOM)

Travel costs can be reimbursed.
Refreshments and snacks will be
served. (IN PERSON SESSION)

- The basics of Cognitive Behavioural Therapy
- How our thoughts, feelings and behaviours are linked
- How to set goals
- The difference between low mood and depression
- Plus more...



STRENGTHENING FAMILIES FOR A STRONGER COMMUNITY

Part of the VRU's Community Based Mental Health and
Emotional Well-Being Support Pilot

Session five:

INTERNET & SOCIAL MEDIA

6 - 7:30 pm

October 17th, 2023

The Nest

(In person)

Unit 4 Co-Operative House

Rye Lane Peckham

London SE15 4UP

OR

12 - 1:30 pm

October 18th, 2023

At: Online (ZOOM)

Travel costs can be reimbursed.
Refreshments and snacks will be
served. (IN PERSON SESSION)

- Privacy settings
- Online friends
- Cyberbullying awareness
- Digital footprint
- Content sharing
- Stranger danger
- Open communication



STRENGTHENING FAMILIES FOR A STRONGER COMMUNITY

Part of the VRU's Community Based Mental Health and
Emotional Well-Being Support Pilot

Session six: **TRANSITIONS**

6 - 7:30 pm
October 24th, 2023
The Nest

(In person)
Unit 4 Co-Operative House
Rye Lane Peckham
London SE15 4UP

OR

12 - 1:30 pm
October 25th, 2023
At: Online (ZOOM)

Travel costs can be reimbursed.
Refreshments and snacks will be
served. (IN PERSON SESSION)

- What are transitions and why are they sometimes difficult
- Identifying transition needs
- Helping your children with their transitions
- Supporting self-care through the Transition period



School	Address	Date	Time
Rye Oak Primary School	Whorlton Rd SE15 3PD	19 th September 23	9:30 – 11:30
Grange Primary School	Webb Street SE1 4RP	5 th October 23	9:30 – 11:30
St George's CoE Primary School	Coleman Road SE5 7TF	17 th October 23	9:30 – 11:30
Southwark Park Primary School	383 Southwark Park Rd SE16 2JH	14 th November 23	9:30 – 11:30
Ivydale Primary School	Ivydale Rd SE15 3BU	12 th December 23	9:30 – 11:30
Oliver Goldsmith Primary School	83 Peckham Road SE5 8UH	23 rd January 24	9:30 – 11:30
Albion Primary School	Albion Street Rotherhithe SE16 7JD	20 th February 24	9:30 – 11:30

Hollydale Primary School	Hollydale Road SE15 2AR	12 th March 24	9:30 – 11:30
St Joseph's RC Primary	George Row SE16 4UP	28 th March 24	9:30 – 11:30
John Keats Primary School	391 Rotherhithe New Road SE16 3FN	16 th April 24	9:30 – 11:30
Belham Primary School	165 Bellenden Rd SE15 4DG	14 th May 24	9:30 – 11:30
St Joseph's Catholic Primary School	Gomm Road Lower Road Rotherhithe SE16 2TY	11 th June 24	9:30 – 11:30
John Donne Primary School	Wood's Rd SE15 2SW	9 th July 24	9:30 – 11:30