

# Bessemer Primary School Newsletter



**Part of The Gem Federation**

[www.thegemfederation.co.uk](http://www.thegemfederation.co.uk)

**Executive Headteacher:** Sarah Beard

**Address:** Dylways, London, SE5 8HP

**Email:** [bessemer@gemfed.co.uk](mailto:bessemer@gemfed.co.uk)

**Telephone:** 020 7274 2520

**Head of School:** Elizabeth Whitehead

## Dates for your Diary

**Friday 4<sup>th</sup> October 2024**

### Term Dates 2024-25

September 2024	October 2024	November 2024	December 2024
Mo Tu We Th Fr Sa Su	Mo Tu We Th Fr Sa Su	Mo Tu We Th Fr Sa Su	Mo Tu We Th Fr Sa Su
1	1	1	1
2	2	2	2
3	3	3	3
4	4	4	4
5	5	5	5
6	6	6	6
7	7	7	7
8	8	8	8
9	9	9	9
10	10	10	10
11	11	11	11
12	12	12	12
13	13	13	13
14	14	14	14
15	15	15	15
16	16	16	16
17	17	17	17
18	18	18	18
19	19	19	19
20	20	20	20
21	21	21	21
22	22	22	22
23	23	23	23
24	24	24	24
25	25	25	25
26	26	26	26
27	27	27	27
28	28	28	28
29	29	29	29
30	30	30	30
31	31	31	31

January 2025	February 2025	March 2025	April 2025
Mo Tu We Th Fr Sa Su	Mo Tu We Th Fr Sa Su	Mo Tu We Th Fr Sa Su	Mo Tu We Th Fr Sa Su
1	1	1	1
2	2	2	2
3	3	3	3
4	4	4	4
5	5	5	5
6	6	6	6
7	7	7	7
8	8	8	8
9	9	9	9
10	10	10	10
11	11	11	11
12	12	12	12
13	13	13	13
14	14	14	14
15	15	15	15
16	16	16	16
17	17	17	17
18	18	18	18
19	19	19	19
20	20	20	20
21	21	21	21
22	22	22	22
23	23	23	23
24	24	24	24
25	25	25	25
26	26	26	26
27	27	27	27
28	28	28	28
29	29	29	29
30	30	30	30
31	31	31	31

May 2025	June 2025	July 2025	August 2025
Mo Tu We Th Fr Sa Su	Mo Tu We Th Fr Sa Su	Mo Tu We Th Fr Sa Su	Mo Tu We Th Fr Sa Su
1	1	1	1
2	2	2	2
3	3	3	3
4	4	4	4
5	5	5	5
6	6	6	6
7	7	7	7
8	8	8	8
9	9	9	9
10	10	10	10
11	11	11	11
12	12	12	12
13	13	13	13
14	14	14	14
15	15	15	15
16	16	16	16
17	17	17	17
18	18	18	18
19	19	19	19
20	20	20	20
21	21	21	21
22	22	22	22
23	23	23	23
24	24	24	24
25	25	25	25
26	26	26	26
27	27	27	27
28	28	28	28
29	29	29	29
30	30	30	30
31	31	31	31

School Holidays	INSET Days	Tutorial Day	Bank Holidays
-----------------	------------	--------------	---------------

### This Year's Class Assembly Dates

Class assemblies take place at 9.15 am on Thursday mornings and last for about 15 minutes. Parents and carers are invited to come along and watch their children present their learning from their half termly topic.

Years 1,2 and 3		Years 4,5 and 6	
Thursday 21 <sup>st</sup> November	1NS	Thursday 28 <sup>th</sup> November	5FM
Thursday 30 <sup>th</sup> January	3/4BW	Thursday 6 <sup>th</sup> February	6LM
Thursday 13 <sup>th</sup> February	2SD	Thursday 13 <sup>th</sup> March	6MS
Thursday 20 <sup>th</sup> March	2LT	Thursday 27 <sup>th</sup> March	4BG
Thursday 3 <sup>rd</sup> April	3LS	Thursday 8 <sup>th</sup> May	5RS
Thursday 15 <sup>th</sup> May	3NI	Thursday 22 <sup>nd</sup> May	4GS
Thursday 5 <sup>th</sup> June		Thursday 12 <sup>th</sup> June	6SB
Thursday 19 <sup>th</sup> June	1ST	Thursday 26 <sup>th</sup> June	5OF
Thursday 3 <sup>rd</sup> July	1JM		

## Dates for your Diary

### Upcoming Events for the Autumn Term

07 - 11.10.24 – Year 1 Bikeability course  
 08.10.24 – Flu immunisations in school  
 08.10.24 – Parents’ evening  
 09.10.24 – parents’ evening  
 10.10.24 – Year 5/6 maths workshop for parents, 9.15am  
 11.10.24 – Year 1 maths workshop for parents, 9.15am  
 14 - 18.10.24 – Year 2 Bikeability course  
 18.10.24 – F@B AGM, 9am  
 19.10.24 – F@B family fun run, 2pm  
 21 - 22.10.24 Year 3 Bikeability course  
 22.10.24 – Nursery reading workshop for parents, 9.15am  
 23 - 24.10.24 – Year 4 Bikeability course  
 23.10.24 – Reception maths workshop for parents, 9.15am  
 25.10.24 – Break up for half term  
 04.11.24 – Children return to school  
 05.11.24 – Year 1 Celebration Day for parents, 9.15am  
 04 - 08.11.24 – Year 5 Bikeability course  
 11 - 15.11.24 – Year 6 Bikeability course  
 13.11.24 – Early Years Celebration Day for parents, 9.15am  
 14.11.24 – Year 3/4 maths workshop for parents, 9.15am  
 14.11.24 – Year 5 trip to Victorian Docks  
 26.11.24 – Online safety workshop for parents and carers, 5-6pm  
 03.12.24 - Year 5/6 reading workshop for parents, 9.15am – change of date  
 14.12.24 – Winter fair, 12-3pm  
 17.12.24 – Year 3/4 carol concert at St Faith’s, 5.30pm  
 18.12.24 – Year 5/6 carol concert at St Faith’s, 5.30pm  
 18.12.24 – Children’s Christmas lunch  
 19.12.24 – Class parties  
 20.12.24 – Last day of term, 2pm finish

### Autumn Term Library Visits

Each term every class has the opportunity to visit Grove Vale library. Children spend some time exploring the library, younger children often have a story session and then all children borrow a book to bring back to school with them. If you are able to accompany your child’s class on their library visit please speak to their class teacher.

Date	10:20- 11am	Date	10.20-11am
Thurs 19 <sup>th</sup> September	6LM	Thurs 24 <sup>th</sup> October	3LS
Fri 20 <sup>th</sup> September	6MB	Fri 25 <sup>th</sup> October	2LT
Thurs 26 <sup>th</sup> September	6SB	Thurs 7 <sup>th</sup> November	2SD
Fri 27 <sup>th</sup> September	5RS	Fri 8 <sup>th</sup> November	1JM
Thurs 3 <sup>rd</sup> October	5FM	Thurs 14 <sup>th</sup> November	1NS
Fri 3 <sup>th</sup> October	5OF	Fri 15 <sup>th</sup> November	1ST
Thurs 10 <sup>th</sup> October	4GS	Thurs 21 <sup>st</sup> November	Moonbeam
Fri 11 <sup>th</sup> October	4BG	Fri 22 <sup>nd</sup> November	Rainbow
Thurs 17 <sup>th</sup> October	3/4BW	Thurs 28 <sup>th</sup> November	Sunshine
Fri 18 <sup>th</sup> October	3NI	Fri 29 <sup>th</sup> November	Ladybird
		Thurs 5 <sup>th</sup> December	Butterfly



## News and Reminders

### Parents' Evenings

Don't forget to make your appointments for parents' evenings on Tuesday and Wednesday next week. Appointments can be booked on Parentmail but if you have any problems please contact the office.

### Parking

We have noticed a number of cars parking on double yellow lines or across the barriers at pick up times. We have received complaints about this from neighbours who have also contacted the council parking enforcement department, sometimes sharing photos of the cars involved, which can result in parking tickets being issued. Parking in these places makes it unsafe for children and families crossing the road and causes traffic congestion which also puts children at risk. Please only park in allocated parking bays, even if this means parking further away from school.

### Early Years Playground

While there is still some snagging to be completed, we should be able to open the Early Years playground on Monday! This means that we will be returning to the usual drop off and pick up arrangements using the black Early Years gates. We have invited Alan Foster, the chair of F@B to officially open the playground when we open the gates on Monday morning, Early Years parents and carers please come along and have a look.

### National Poetry Day

Thursday 3<sup>rd</sup> October was National Poetry Day. Children across the school practiced reciting poetry and later this month they will be performing their poems in a special performance poetry assembly. We'll share some videos on the website so watch out for them! Here are the Year 2s practising their performance.



### Year 6 Football Team

This week Year 6 boys and girls took place in a lunchtime football tournament to try out for our football teams that will represent us in a league run by LPESN after the half term break. The standard of play and sportspersonship displayed was excellent, making it very difficult to choose the teams. Congratulations to the following girls and boys that have been selected.

Tofarati	Tayo
Ruby	Ali
Izzy	Paul
Johanna	Bill
Polly	Fayo
Lucy	Francesco
Olive	Neron
Khadijah	Michael
Violet	Gabriel
Emily T	



### Headlice

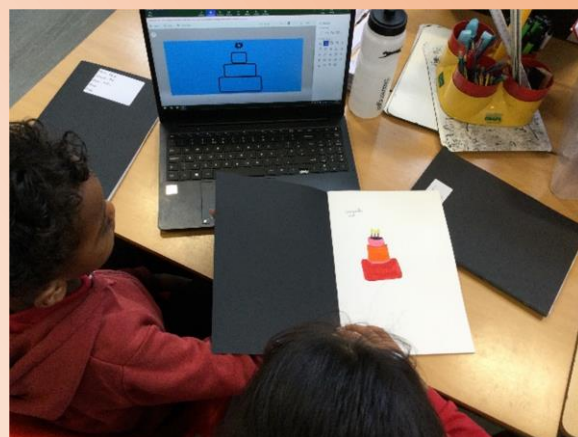
There have been a number of cases of headlice in school. Please make sure that you check your child's hair and treat thoroughly if necessary, it is only possible to stop the spread if everyone follows



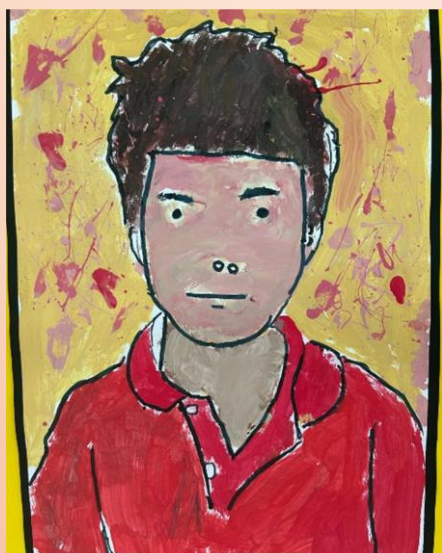
### Sharing Children's Learning

Demonstrating our core values of being *Academically Ambitious* and *Creative and Practical*

Children in Year 4 have been creating art in computing lessons. They practised drawing objects in their sketch books and then recreating them on the computer:



Then they used the skills they had learnt to recreate the self-portraits that they painted during the art project in the first week of term:



Some of the final results:



Look out for more great examples on display in the corridors during parents' evenings next week!



### Sharing Children's Learning

#### **Demonstrating our core value of being *Creative and Practical***

Children in Year 1 have been exploring their senses in science. They explored their sense of taste by trying different flavours:



In music this week children in Year 4 worked in groups to compose and perform a piece of music based on a story, they used different instruments to represent animals and other jungle sounds:



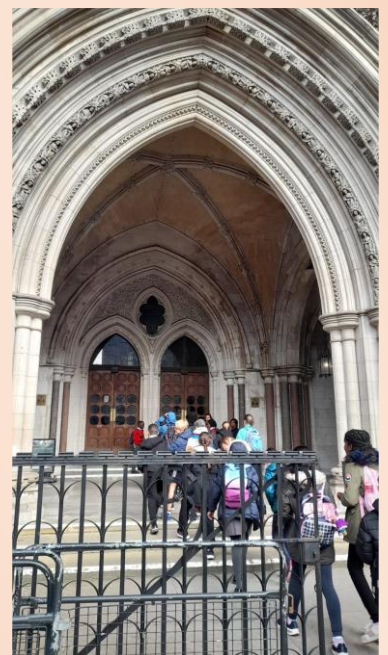


**Sharing Children's Learning**  
**Demonstrating our core value of being *Creative and Practical***

Children in Reception have been enjoying balance bike sessions with Cycle Confident this week:



To support their understanding of online safety children in Year 6 went to The Royal Courts of Justice to take part in a mock trial based on cyber bullying. There are no photos allowed inside the courts, but here they are on arrival:



## Word of the Week

The Word of the Week next week is **vibrant**. Please help your child to find out the meaning of the word and try using it in different ways in sentences. You could also research the origins of the word and see if you can think of any related words with the same origin.

Try to use the word of the week as much as possible so that it becomes part of your child's vocabulary. Children will receive gems in school for using the word in their speech and writing and for explaining its meaning and origin.

## F@B Update

## Two weeks to go until the Bessemer fun run!

We hope you can join us on Saturday 19 October at 2pm for our annual family run and fundraiser.

We have 3 events that day: 1km, 3km and 5km. All ages and abilities are welcome and the all-important supporters who can give a cheer to help our runners get across the finish line.

Medals for all young runners! Plus tasty treats and hot drinks are available to buy from the Copper Beech cafe which is next to the sports field.

There is a small entry fee for adult runners. Children are free! If you are able to get sponsorship or support from friends or family that would be fantastic! Donations can be made via the link below.

## Register online

here: [https://docs.google.com/forms/d/e/1FAIpQLScLFG9pHxX0DZA04nKg0y\\_fhhhLElfgtQFrb94iJWfohbgGA/viewform](https://docs.google.com/forms/d/e/1FAIpQLScLFG9pHxX0DZA04nKg0y_fhhhLElfgtQFrb94iJWfohbgGA/viewform)

Pay your registration fee (adults) or add any sponsorship

here: <https://www.peoplesfundraising.com/donation/bessemer-fun-run-2024>

See you there!

## Online Safety Tip of the Week

Social media can be a great way to stay connected with friends and loved ones. But what are the age restrictions on the most popular ones? This and other important questions about social media use for young people are answered on the NSPCC website:

<https://www.nspcc.org.uk/keeping-children-safe/online-safety/social-media/>

## Social Media Age Restrictions







# Celebrations!

## Certificates

	Star	Writer	Mathematician	Presenter	Scientist
<b>Rainbow</b>	Reception children will start to receive certificates later in the term when they have settled in fully.				
<b>Sunshine</b>					
<b>Moonbeam</b>					
<b>1JM</b>	Isaac	Leo I	Rex	Maseyr	
<b>1NS</b>	Felix	Henry	Violet	Marlow	Tobi
<b>1ST</b>	Joseph	Safiyatu	Nasir	Scarlett	
<b>2SD</b>	Djene	Jolyon	Johnny G	Tilly	Tammany
<b>2LT</b>	Lariah	Eimi	Sam	Brijit	
<b>3LS</b>	Genny	Malachi	Edward	Rayha	
<b>3NI</b>	Humaira	Nyeela	Athena	Kenza	
<b>3/4BW</b>	Felix	Helene	Ruby	Maya	Aymar Yr3 Finn Yr4
<b>4BG</b>	Makai	Shakelton	Sarah	Beau	
<b>4GS</b>	Elliott	Jacob	Phoenix S	Phoenix M	
<b>5RS</b>	Lucie	Sharon	Elijah	Jadon	
<b>5OF</b>	Luciano	Callum	Tobias	Alkyoni	Amelia
<b>5FM</b>	Remy	Riccardo	Harry	Daniel	
<b>6LM</b>	Polly	Virtue	Tayo	Gloria	
<b>6SB</b>	Lucy	Max E	Edward	Emily	Alexis
<b>6MS</b>	Gabriel	Martha	Ali	Owen	

## Individual Timestable Rockstars

Year 1	Year 2	Year 3	Year 4	Year 5	Year 6
Liam	Teddy	Phoebe	Aidan	Callum H	Andrea

## Timestable Rockstars Winning Classes

Key Stage 1	Lower Key Stage 2	Upper Key Stage 2
2SD	4GS	6MS

House Winners	<b>Rubies!</b>
------------------	----------------



Have a great weekend!

*Elizabeth*



# PARENT WORKSHOP

**DOES IT EVER FEEL LIKE YOUR  
CHILD'S EMOTIONS GET TOO BIG TO  
HANDLE, TOO QUICKLY?**



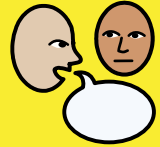
**NOT SURE  
WHAT TO DO?**



**COME ALONG FOR A  
SESSION WITH THE  
SCHOOL EP TO FIND OUT  
ABOUT THE ESCALATION  
CYCLE AND HOW TO  
DEAL WITH IT.**

**AT 9-10AM, WITH TIME  
AFTERWARDS FOR QUESTIONS  
ON TUESDAY 19TH NOVEMBER**

# Parent 1:1 Coaching Sessions – Support for You and Your Family



## Would you like to talk to someone about parenting confidentially?

If you're feeling anxious about your child's behavior or just need some support with general parenting concerns, we are here to help. Our 1:1 parent/carer coaching sessions, in partnership with Groundworks, have been running successfully for 2.5 years.

### What's on offer?

- **Trained practitioners** who provide tailored support for you, either face-to-face in school or remotely via MS Teams.
- **Flexible sessions:** 5 – 9 one-on-one sessions during school hours, designed around your needs.
- **Focused support:** All sessions centre on managing anxiety, challenging behavior, and general parenting concerns.

**Important:** This service is not suitable if you are already working with external services like CAMHS, family early help, or autism support.

### What parents are saying:

*"It was one of the best things I did, and it was nice as a parent to get 1:1 support and advice. I was apprehensive at first, as I've been to other group parenting classes that can feel general, but this was specific to my own child. The sessions were structured, and we recapped and adjusted strategies each week. The support gave me so much more confidence in managing my son, and it helped me as his mother to understand his sometimes complex needs."*

— Parent, Summer Term 2024

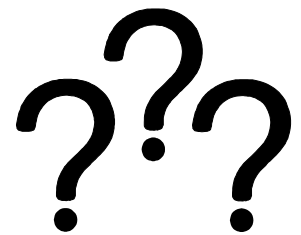




## Interested?



To enquire about the support, preferably email Lori at [lknight@gemfed.co.uk](mailto:lknight@gemfed.co.uk). Please include responses to the questions [Listed below]. However, if you would prefer, we can arrange a telephone call to discuss these questions instead - just email to request a call back.



- Child's name and Class
- Presenting concerns (e.g. Behaviors you are concerned about in relation to your child's anxiety or common behavior problems)
- Any previous or current support for the issue (e.g. child has previously accessed counselling support)
- Any triggers for the problem (e.g School drop off time, bed time, busy places, social situations)
- How long the issue has been going on for?
- Is there anything else that you think might be helpful for us to know about your family?





UCL

**Are you a parent/carer of a child who has difficulties with attention or hyperactivity, or a diagnosis of ADHD?**

**Help us to understand more about what support parents need by answering a short survey:  
Scan the QR code to find out and take part!**



Southwark  
**2030**

**CREATING GOOD  
LIVES TOGETHER**







**THE PE & SCHOOL SPORTS NETWORK**



**AGES  
5-18**

"The Saturday club has been a lifeline for my son. He has many friends and looks forward to going. He also uses the trampoline as a release of tension."

# SEND SATURDAY SPORTS CLUB

**OPEN EVERY SATURDAY**  
(TERM TIME ONLY)

**OPEN TO SEND PUPILS IN  
SOUTHWARK**

For more information please contact Glyn and George via the emails below.

Glyn Davies: [glyn@lpessn.org.uk](mailto:glyn@lpessn.org.uk)

George Richards: [george@lpessn.org.uk](mailto:george@lpessn.org.uk)

Telephone: 0207 237 1525 Ext: 4086 - Website: [www.lpessn.org.uk](http://www.lpessn.org.uk)







The Saturday sports club runs through the year at Bacon's College. The club caters for SEND students of all disabilities between the ages of 5 - 18 years old. Each session lasts for 60 minutes.

There is a highly skilled and motivated team of 14 working at the club ranging from teachers, teaching assistants, coaches, and special needs specialists.

As well as improving fitness levels and health and wellbeing the club works on social skills such as listening skills, waiting, sharing, teamwork, individual work and focus.

Sports and activities change weekly - trampolining, nature trail and the gym for the older clients, volleyball, football, basketball, multi skills, tennis, cricket, badminton, boccia, new age curling, dance, parachute games, athletics, capoeira, etc.

## The club currently run in 4 different sessions:

**Session 1: 10:30 - 11:30**

**Session 2: 11:30 - 12:30**

**Session 3: 12:30 - 13:30**

**Session 4: 14:00 - 15:00**

### Venue:

Bacon's College, Timber Pond Road  
Rotherhithe, London  
SE16 6AT

"The Network and Saturday Sports Club at Bacon's College has offered myself and family much-needed respite. Glyn, George and the team are very understanding and aware of my son's SEN needs: autism and ADHD."

# SEND SATURDAY SPORTS CLUB





# SPORTS FOCUS COACHING

## October Camp



Nerf Guns, Football, Floor is Lava, Halloween Arts & Crafts, Tennis

Locations: Bessemer Primary School, Dylways

Ages: Reception - Year 6

Monday, 28th October - Friday, 1st November



Times & Prices:

9:00 - 12:00 £20

12:00 - 15:00 £20

9:00 - 15:00 £30

Early drop off 8:30 additional £3

Late pick up 17:00 additional £5



Fancy Dress Competition, Dodge Ball, Cricket, Athletics, Cooking & More!

Spaces are limited

To book

[www.sportsfocusuk.co.uk](http://www.sportsfocusuk.co.uk)

For further info

Email: [bookings@sportsfocusuk.co.uk](mailto:bookings@sportsfocusuk.co.uk)

or Call: 07946 007937



Sportsfocuscoaching...



Sports Focus Coaching Limited

